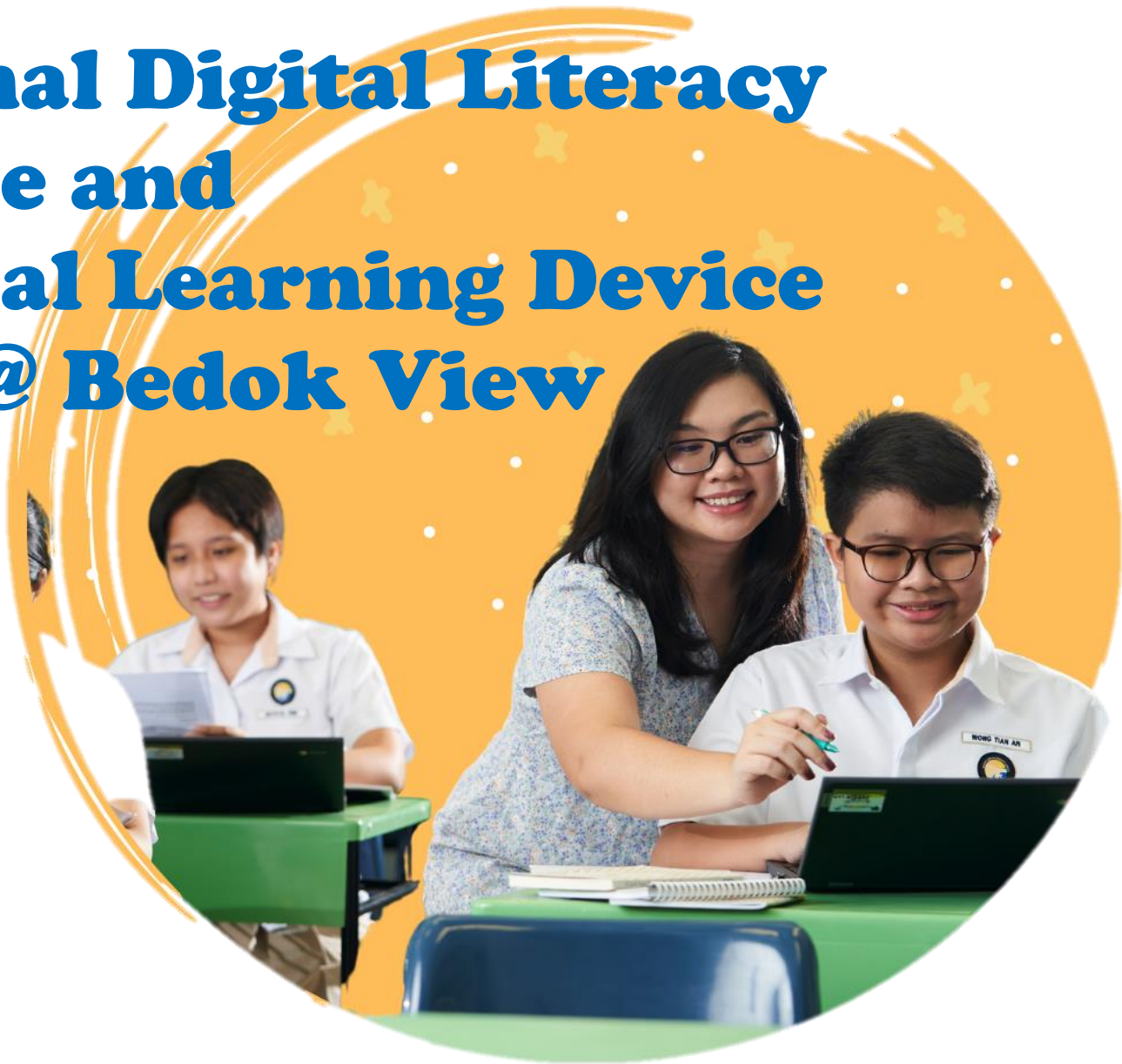


The National Digital Literacy Programme and the Personal Learning Device Initiative @ Bedok View



Our Vision: Learners who Learn For Life, Leaders who Light the Way

Our Values: • Respect • Responsibility • Integrity • Service • Excellence

OVERVIEW

1. Background
2. Learning with a Personal Learning Device
3. Device and Funding Information
4. Supporting students in the safe use of devices
5. Parents' support
6. FAQs
7. Next Steps



Our Vision: Learners who Learn For Life, Leaders who Light the Way

Our Values: • Respect • Responsibility • Integrity • Service • Excellence

1. BACKGROUND

1. The **National Digital Literacy Programme (NDLP)** was launched in March 2020 to make digital learning inclusive by equipping students with the digital literacies to be future-ready.
2. **Personal Learning Device (PLD) Initiative**
To enhance teaching and learning through e-pedagogy and personalised students' learning, every secondary school student will be equipped with a **personal learning device** by 2021.



Our Vision: Learners who Learn For Life, Leaders who Light the Way

Our Values: • Respect • Responsibility • Integrity • Service • Excellence

INTENDED OUTCOMES



Support the Development of Digital Literacies



Support self-directed and collaborative learning



Enhance Teaching and Learning



Our Vision: Learners who Learn For Life, Leaders who Light the Way

Our Values: • Respect • Responsibility • Integrity • Service • Excellence

2. Learning with PLD at BV

Your child will be using them for lessons, tasks requiring research, digital research and collaborative learning tasks , CCAs, Project work, HBL day lessons, Assessments



Our Vision: Learners who Learn For Life, Leaders who Light the Way

Our Values: • Respect • Responsibility • Integrity • Service • Excellence

3. Device and Funding Information



Our Vision: Learners who Learn For Life, Leaders who Light the Way

Our Values: • Respect • Responsibility • Integrity • Service • Excellence

BV PLD INITIATIVE

From 2023, the school will be using **Apple Ipad 10.2" 9 G** for teaching and learning.



Google Classroom



Our Vision: Learners who Learn For Life, Leaders who Light the Way

Our Values: • Respect • Responsibility • Integrity • Service • Excellence

BV Personal Learning Device

The school chose the device because of:

(a) Portability -

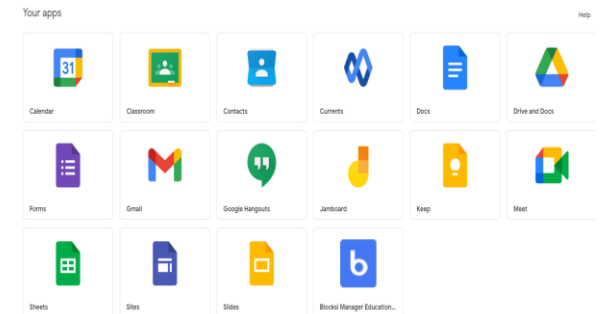
- **Compact and Lightweight**

(b) Durability

- Logitech Ruggedized combo keyboard provides **the necessary protection**

(c) Teaching and learning affordances

- **Compatibility** with Google Suite and SLS
- **Use of apple pencil** for inking, note-taking, drawing etc



Our Vision: Learners who Learn For Life, Leaders who Light the Way

Our Values: • Respect • Responsibility • Integrity • Service • Excellence

BV Personal Learning Device



Total Cost with GST:

\$857.50 for

3 Year warranty and insurance

**Apple Ipad 10.2”
9G Bundle**

**(with Logitech keyboard and
Gen 1 apple pencil)**

Insurance coverage	Claimable
<ul style="list-style-type: none">• Fire• Lightning• Power Surges• Accidental, eg water spillage, drop etc• Theft due to forcible entry• Robbery	2 Repairs or 1 replacement (3 year insurance)

Our Vision: Learners who Learn For Life, Leaders who Light the Way

Our Values: • Respect • Responsibility • Integrity • Service • Excellence



BV Personal Learning Device Specs



Model	Apple iPad 10.2" 9th Gen
Price of Enhanced Bundle With GST*	\$857.50 (3 year carry in Warranty, Sealed Battery Warranty and Comprehensive Accidental Damage Protection(Insurance))
Processor	A13 Bionic
RAM	3GB RAM
Storage	64GB ROM
Display	10.2"
Weight	0.487kg (excluding Logitech keyboard and pencil)
Screen Panel	1620 x 2160
Graphics Coprocessor	Apple GPU (4-core graphics)
Ports	Lightning; magnetic connector
Connectivity	Wi-Fi 802.11 a/b/g/n/ac, dual-band (2.4Ghz and 5Ghz)
Camera	Camera 8 MP (Back) and 12MP (front)
What's included in the enhanced bundle	Power adapter and charging cable, Apple Pencil (1 st Gen) with USB-C adapter, Logitech Ruggedized Combo 3



Our Vision: Learners who Learn For Life, Leaders who Light the Way

Our Values: • Respect • Responsibility • Integrity • Service • Excellence

Funding Support for Singapore Citizen (SC) Students

- The cost of the device bundle can be paid **using your child's/ward's Edusave account**, after setting aside provision for payment of second-tier miscellaneous fees.
- To ensure the affordability of devices, MOE has provided Edusave top-ups in 2020 to 2022 (\$200 in each year) to all eligible SC students in primary and secondary schools.
- This is on top of the annual **\$290** credited into the Edusave account for Secondary School students and \$230 for Primary School students.



Our Vision: Learners who Learn For Life, Leaders who Light the Way

Our Values: • Respect • Responsibility • Integrity • Service • Excellence

Funding Support for Singapore Citizen (SC) Students

- For SC students who are on MOE Financial Assistance Scheme or whose family's monthly income meets the following criteria:
 - Gross Household Income (GHI) \leq \$3,000, or
 - Per Capita Income (PCI) \leq \$750the school will subsidise **50% of device bundle cost or \$350, whichever is lower.**
- The remaining amount will be payable from the students' Edusave account. If there is insufficient balance in the students' Edusave account for the remaining amount, school will provide additional subsidy so that the cash out-of-pocket (OOP) is \$0.
- For more details, please approach the school.



Funding Support for Non-Singapore Citizen Students

- For non singapore citizens, you will need to pay the sum stated for the device.
- Permanent residents (PR) and international students (IS) who need support could apply for subsidies, particularly those whose Gross Household Income (GHI) is below \$4400 or Per Capita Income (PCI)# is below \$1100.
- For more details, please approach the school.

#PCI is GHI divided by the number of household members.



Our Vision: Learners who Learn For Life, Leaders who Light the Way

Our Values: • Respect • Responsibility • Integrity • Service • Excellence

4. Supporting Students in the Safe and Effective Use of the Devices



Our Vision: Learners who Learn For Life, Leaders who Light the Way

Our Values: • Respect • Responsibility • Integrity • Service • Excellence

Cyber Wellness Education

Educating students on Cyber Wellness

At BV, Cyber Wellness lessons will feature significantly in the **CCE lessons and assembly programmes.**



Our Vision: Learners who Learn For Life, Leaders who Light the Way

Our Values: • Respect • Responsibility • Integrity • Service • Excellence

Device Management Application

- The Device Management Application (DMA) software will be installed on all students' **learning devices** to provide a safe learning experience for the students and to prevent misuse of the device.

As a default, these settings are as such:

- **Web content filtering**, including filtering out social media sites, pornography, gambling, extremist and violence-related sites
- **Apps and programmes** to be installed to support teaching and learning is determined by the school.



Our Vision: Learners who Learn For Life, Leaders who Light the Way

Our Values: • Respect • Responsibility • Integrity • Service • Excellence

After-school PLD use DMA Settings

Default

In-school DMA settings will continue after school hours

Option A

Parents can determine DMA settings after school hours

Option B

Parents can choose to disable DMA after school hours

- **Parents will receive more information on exercising the options later.**
- **Parents can request to change their choice of DMA settings at any time.**



Our Vision: Learners who Learn For Life, Leaders who Light the Way

Our Values: • Respect • Responsibility • Integrity • Service • Excellence

Data Collected and Access Rights

The DMA will be **funded by MOE** and will be **uninstalled** from the device **when student graduates/leaves the school.**

The DMA does **NOT** collect any of these data:

- Login IDs and passwords
- Activities and data (e.g. posts, online comments, shopping cart, etc.) when visiting websites and use apps
- Documents and photos stored in the PLDs
- PLD location
- Webcam videos and microphone recordings



Our Vision: Learners who Learn For Life, Leaders who Light the Way

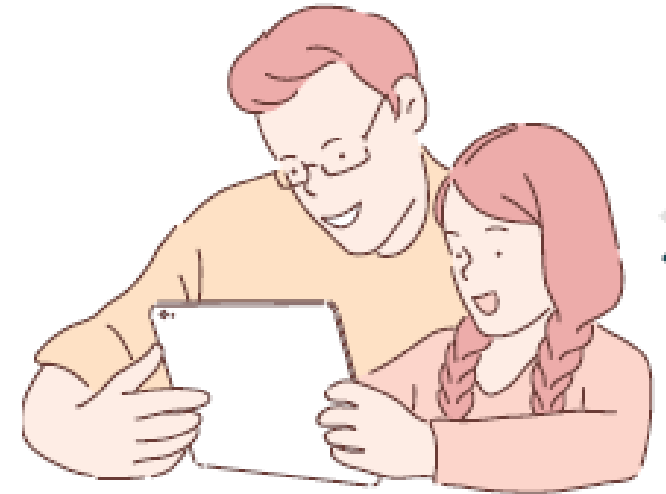
Our Values: • Respect • Responsibility • Integrity • Service • Excellence

5. Parents' support in NDLP



- As parents, you can help in the following ways:
 - Model good digital habits for your child.
 - Know your child well, and have conversations with your child about safe and responsible use of technology.
 - Set ground rules for internet use.
 - Navigate the internet together to understand their usage.

For more tips, check out MOE's Parent Kit on cyber wellness by scanning the QR code



Our Vision: Learners who Learn For Life, Leaders who Light the Way

Our Values: • Respect • Responsibility • Integrity • Service • Excellence

6. Frequently Asked Questions (by Parents)



Our Vision: Learners who Learn For Life, Leaders who Light the Way

Our Values: • Respect • Responsibility • Integrity • Service • Excellence

FAQ 1

- **What happens if the child's device is down or need repairs?**

Technical support will be provided to students through the following:

- Service-desk set up in school during breaks and after school on a weekly basis
- Collection of devices to be sent for repairs
- Service center at A.LAB @ Changi City Point #01-55 Changi City Point 5 Changi Business Park Central 1 Singapore 486038

The school will have a pool of devices for students to loan/use in the meantime.



Our Vision: Learners who Learn For Life, Leaders who Light the Way

Our Values: • Respect • Responsibility • Integrity • Service • Excellence

FAQ 2

- **What if I prefer for my child/ward to use his/her own personal computing device in school?**

Device has to be a currently-owned **ipad** as the Device Management Application (DMA) needs to be installed for the PLD to be used in school.

Do note a **factory reset** of your device may be required for installation of the DMA, which is compulsory for all students' learning devices.

You will need to bring your device for assessment on some areas such as the following (not exhaustive):

- device should not be older than 4 years from manufacturing date;
- battery should hold charge for at least 4 hours;
- comparable features to school's bulk tender devices (e.g. keyboard, stylus, etc)
- comparable performance to school's bulk tender devices etc...



Our Vision: Learners who Learn For Life, Leaders who Light the Way

Our Values: • Respect • Responsibility • Integrity • Service • Excellence

7. What's Next



Our Vision: Learners who Learn For Life, Leaders who Light the Way

Our Values: • Respect • Responsibility • Integrity • Service • Excellence

What's Next

For Singapore Citizens/Permanent Residents (PR) / International Students (IS)

Time Frame	Activity
Mon, 16 Jan 2023	PG/ Letter will be sent to parents for consent to purchase and edusave withdrawal. A link will be embedded. Submit by 31 Jan 2023 (Deadline)
Feb 2023 onwards (after billing)	Parent/Guardian to make payment via Giro / PayNow/ Cheque / etc where applicable
April 2023 onwards	Collection of Devices by students

Collection of Devices

Your child will be collecting his/her device, **estimated April onwards -notification to parents will be sent via PG.**

As the PLD needs to be onboarded with DMA, your child will be collecting the PLD in school.

- Should you be concerned that your child will not be able to properly verify the condition of the computing device, please approach the school for further advice or clarification if you would like to make this arrangement.



Our Vision: Learners who Learn For Life, Leaders who Light the Way

Our Values: • Respect • Responsibility • Integrity • Service • Excellence

Important Contacts/ Helplines

To access/find out more about...	Contact/Helpline
Edusave Balance	6260 0777
Financial assistance available	General office: 6443 0563
Further queries	Email to: bedokview_ss@moe.edu.sg



Our Vision: Learners who Learn For Life, Leaders who Light the Way

Our Values: • Respect • Responsibility • Integrity • Service • Excellence

THANK YOU



Our Vision: Learners who Learn For Life, Leaders who Light the Way

Our Values: • Respect • Responsibility • Integrity • Service • Excellence