

Welcome Back!

Briefing Slides for Release of 2024 O-Level Results



Dear students,

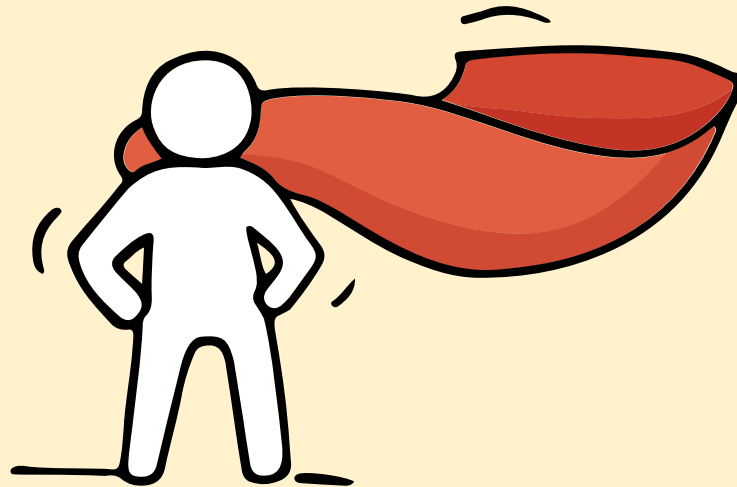
You have worked hard to reach this stage. Let's celebrate your efforts!



Finally, we are going to get our results!



Remember that while **everyone's educational journey is different, we can each have a fulfilling outcome!**



Resources to support you as you receive your results

Receiving your results and making decisions about your post-secondary pathways can be exciting to some, but stressful to others.

<https://go.gov.sg/olevelstudentresource>

Scan this QR code for an infographic with some helpful resources to support you.



Thinking about Your Next Step?

Consider these questions...

Where do I want to go?

Who am I?

How Do I Get There?



In the infographic, you can find resources which can help you make informed decisions.

PLANNING YOUR NEXT STEP

These resources will help you chart your path ahead:



• What's Next Brochure

<https://go.gov.sg/whats-next-nlevel>



• Contact the ECG Centre @ MOE

<https://go.gov.sg/moe-ecg-centre>



• MySkillsFuture Student Portal

<https://go.gov.sg/MySFSec>







• Chat with your school's ECG Counsellor

Resources to help you make informed decisions



PLANNING YOUR NEXT STEP

These resources will help you chart your path ahead:

-  • What's Next Brochure
<https://go.gov.sg/whats-next-nlevel>
-  • Contact the ECG Centre @ MOE
<https://go.gov.sg/moe-ecg-centre>
-  • MySkillsFuture Student Portal
<https://go.gov.sg/MySFSec>
-  • Chat with your school's ECG Counsellor



MySkillsFuture Student Portal

Use the information and tools to explore various education and career pathways and take charge of your future.

Resources to help you make informed decisions

Post-Secondary Education



SchoolFinder
(JCs and MI)

www.go.gov.sg/sf-jcmi



CourseFinder
(Polytechnics and ITE)

www.go.gov.sg/cf



JAE
Worksheet

[www.moe.gov.sg/jaewor
ksheet](http://www.moe.gov.sg/jaewor
ksheet)



Education & Career
Guidance Resources

www.moe.gov.sg/ecgoverview

Concerned about your next steps?

Stop

- Calm yourself down. Take a few deep breaths.

Think

- Think through the different options that are available for you.
- Remember that the N-Level is not the end point and is only one part of your life journey.

Do


- Have conversations with trusted adults who know you well to advise and guide you (parents, teachers, ECG Counsellor).
- Decide and act based on your options.

When you receive your results, you may experience a range of emotions.

Managing these emotions well will allow you to stay calm and make rational decisions.

Reaching out for support is a sign of strength

If you have questions about your options or are not coping well, you can reach out to trusted adults such as a parent/guardian, teacher, School Counsellor or ECG Counsellor. You can also talk to a trusted friend.



Who can we go to for ECG advice?

Make an appointment to speak with your ECG Counsellor in school
(Ms Evelyn See)

OR

Make an ECG counselling appointment via the ECG Centre @ MOE

<https://go.gov.sg/moe-ecg-centre>





Booking of Appointment with ECGC (BVSS)

For O-level Results Release



Ms Evelyn See
ECG Counsellor

1. Slots will be available for **13 to 14 Jan**
2. You will receive a **confirmation email** on successful booking.
3. For online sessions, **meeting details** will be sent to you **via email**, in the morning of the session.

If there are **no more available slots**, you may **make an appointment with the MOE ECG Centre** through **go.gov.sg/moe-ecg-centre**



Online booking (via QR code)
(<https://go.gov.sg/ecgbvss-appt>)

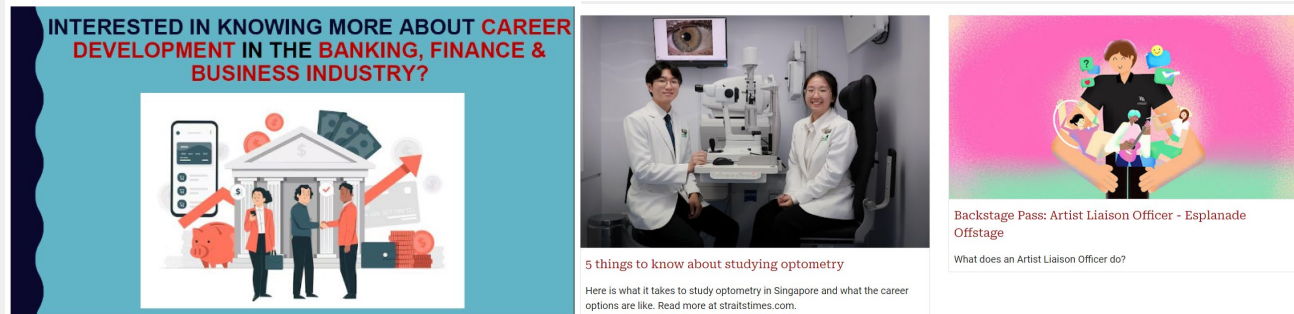


One-stop ECG InfoSite

Discover your Purpose | Explore Opportunities | Stay Relevant

Education and Career Guidance (ECG)

An ECG Microsite for students, teachers and parents!



Exciting ECG-related news articles, videos, websites and latest events e.g. Open Houses, career talks/seminars!



<https://go.gov.sg/bvssecgsite>



Having difficult emotions during a stressful and uncertain period is normal. Keep a look out for some of these signs:

**D
I
S
T
R
E
S
S**

Deliberately avoiding others

Increased irritability, restlessness, agitation, stress and anxiety

Sending or posting moody messages on social media

Talking about death or dying

Reacting differently or gradually losing interest in things they used to like

Eating more than usual or having a much reduced appetite

Sleep pattern changes with difficulty falling asleep or oversleeping

Slowing down of energy levels

If you notice any of these signs in yourself or your friends, **have a chat with your School Counsellor or teacher,**

Or contact SOS 24-hour hotline at **1767** or SOS 24-hour CareText Whatsapp at **91511767**
For cyber wellness related matters, call Help123 at **1800-612-3123*** or email **hello@help123.sg**

*available only from Mon to Fri (excluding Public Holidays), from 9am - 6pm.



Keep a lookout for some of these signs in your peers or in yourself

How can we support one another?



Supporting Your Friend

- We may each experience different emotions upon receiving the results.
- You can share your friends' joy by congratulating them.
- If your friends appear to be disappointed with their results, encourage them.
- Alert a teacher if you are worried for them.



Keep a lookout for your friends in distress. You can support them in the following ways:



Support is readily available for you.

There are other hotlines and chats available if you are more comfortable seeking help using these platforms. These can also be found in the infographic which you accessed earlier.



SOS provides round-the-clock emotional support for those in distress, thinking of suicide or affected by suicide.

Call: **1767**
(24-hour helpline)

Whatsapp: **9151 1767**
(24-hour Care Text)

TOUCHline is a helpline to provide youths with emotional support and practical advice.

Call: **1800-377 2252**

*Monday- Friday (Excluding Public Holidays):
9am – 6pm*

Community Health Assessment Team

(CHAT) provides personalised and confidential mental health checks and consultation for youths. To speak with a youth support worker, you can:

Visit: **CHAT Hub at *Scape, 2 Orchard Link, #04-01A**

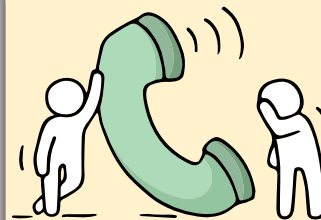
Call: **6493 6500/ 6501**

Email: **CHAT@mentalhealth.sg**

Carey is an online platform by Care Corner that provides free mental health check-ins with mental health professionals. Find out more at:
<https://carey.carecorner.org.sg/>

mindline.sg is an online platform that provides tools, tips and resources to help you manage your health and well-being. Find out more at:

www.mindline.sg



eC2 is an e-Counselling Centre where you can talk to a trained counsellor about the issues you are facing, right where you are.

Chat with a counsellor at:

www.ec2.sg

*Monday – Friday (Excluding Public Holidays):
10am – 12pm & 2pm – 5pm*



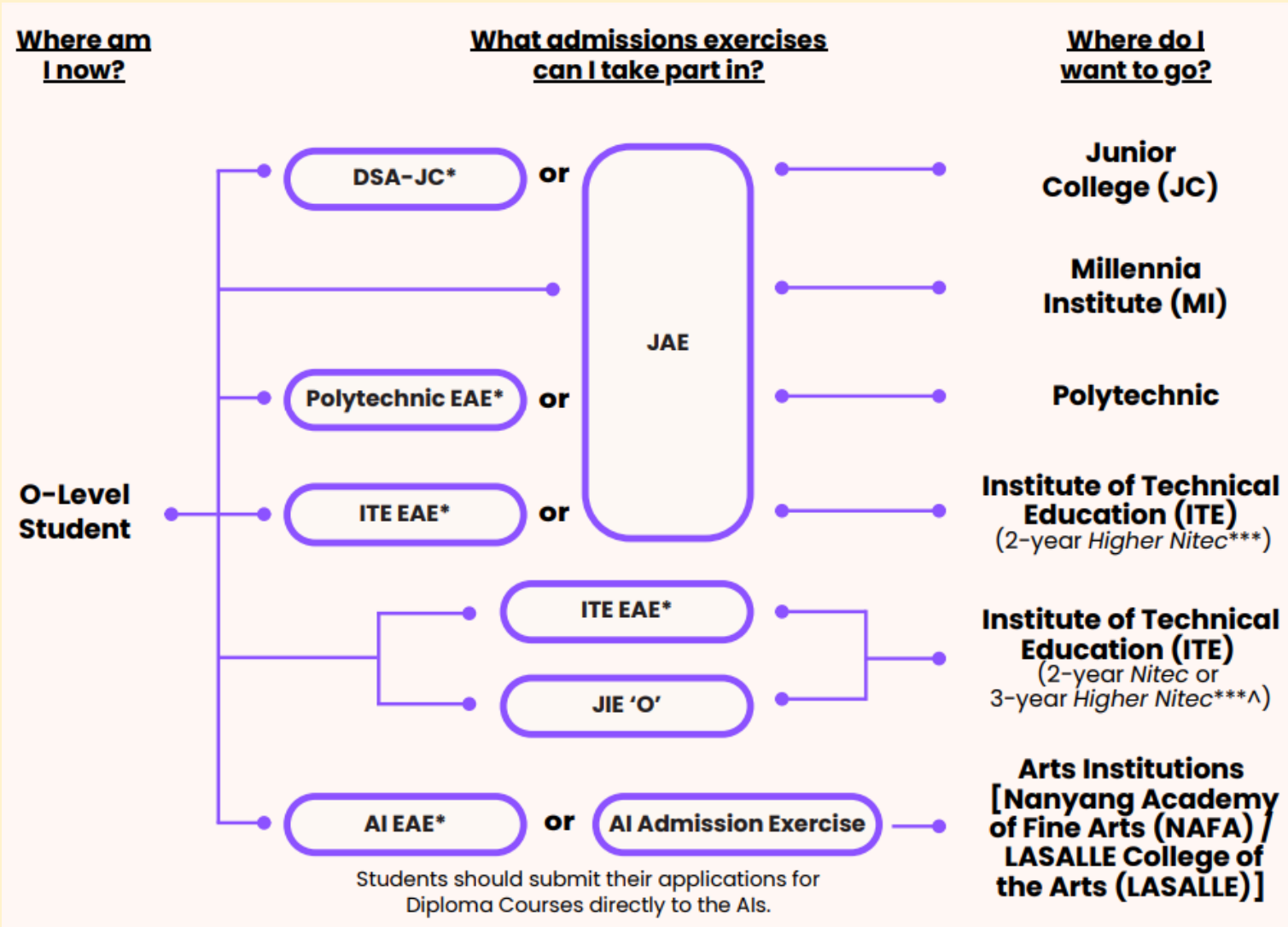
**The O-Level
examination is not
the end point.**

**It is part of your
education journey.**

Admissions Exercises

Things to note





For more information on applying to these courses, you can visit <https://www.moe.gov.sg/post-secondary/admissions>

Source: A Guide to Post-Secondary Admissions Exercises

Details of Admissions Exercise

Arts Institutions – NAFA/LASALLE

GCE O-Level holders with the aptitude and interest to pursue the creative arts at the tertiary level may apply for diploma programmes at the Arts Institutions (AIs). Each AI runs its own admissions exercise, and interested students should apply directly to the institution.

The AIs also run their own Early Admission Exercise, an aptitude-based admissions exercise open to graduating O-Level students, final-year *Nitec* and *Higher Nitec* students from ITE and graduating Integrated Programme (IP) / International Baccalaureate (IB) Year 4 students. This exercise allows students to apply for and receive conditional offers for admission to NAFA and LASALLE prior to receiving their final grades.

NAFA: go.gov.sg/applynafa

LASALLE: go.gov.sg/applylasalle

DSA-JC – Direct School Admission for Junior Colleges

DSA provides students with the opportunity to seek admission to JCs based on a broader range of talents and achievements.

DSA-JC: go.gov.sg/applydsajc

Polytechnic EAE – Polytechnic Early Admissions Exercise

Polytechnic EAE is an aptitude-based admissions exercise that allows students to apply for and receive conditional offers for admission to polytechnics prior to receiving their final O-Level examination results. It allows polytechnics flexibility to admit students based on demonstrated aptitudes and interests, apart from academic grades, thus allowing a wider range of talents to be recognised.

Polytechnic EAE: go.gov.sg/polyeae

JAE – Joint Admissions Exercise

JAE enables GCE O-level holders to apply for courses offered by JCs, MI, polytechnics and ITE (2-year *Higher Nitec* courses).

JAE: go.gov.sg/applyjae

JIE 'O' – Joint Intake Exercise 'O'

The JIE 'O' is conducted to enable GCE O-Level holders to apply for the 2-year *Nitec* or 3-year *Higher Nitec* courses conducted by ITE.

JIE 'O': go.gov.sg/applyjie

For Students Considering Private Education



The 3Rs when deciding on Private Education

Reasons

- Why are you furthering your studies?
- What are the job prospects for your preferred course?

Readiness

- How ready are you to further your studies?
- Can you cope with the academic rigour and assignment deadlines?
- Can you fund your studies?

Risks

- Do you know the possible drawbacks?
 - Your expected returns may not exceed the investments you put into your private education.
 - Private schools may make exaggerated claims.
 - Private schools may close due to various reasons.
 - You may not get a full refund if you withdraw from your course.



8 Things You Should Know Before You Enrol in A Private School



School Registration

Ensure the school is registered with SkillsFuture Singapore (SSG). Review the school's registration period, expiry date and its overall registration track record.



Partner Institution

Research on the partner institution conferring the diploma or degree, and whether the qualification is recognised by the industry.

EduTrust Certification Scheme

Is the school EduTrust-certified*? Under the scheme, private schools are assessed for their performance in areas such as school management and provision of student support services.



**Schools are required to obtain EduTrust certification in order to offer external degree programmes*

School Premises

Head down to the campus ground to check the facilities and support services. Observe the study environment too.



Fee Protection



Ask if there is any course fee protection so that you will be able to recover unconsumed course fees should the school close down.

Beyond Course fees



Find out about the course syllabus and materials, graduation rates and employment prospects. Approach the alumni to find out what they think of the school.

Teachers

Check if the teachers are qualified to teach the course.



Internship

If industry attachment is included, find out which organisation you will be attached to, the period of attachment and the alternative arrangement should the attachment become unavailable. Verify the information with the organisation as well.



Summary of Key Information



Computing Aggregate Scores

Grade conversion for N(A) students who sat for GCE O-Level examinations.

O-Level Grade	N-Level Grade
A1, A2, B3	1
B4, C5, C6	2
D7	3
E8	4

Note: O-Level grade 9 does not count towards either the ELMAB3 aggregate score computation or in determining if minimum entry requirements for the PFP course have been met.

Instructions to Students

IMPORTANT

ALL students are to acknowledge the collection of the following items on the name list:

- GCE O-Level Result Slip
- GCE O-Level Certificate
- Form A (receive via email or download from JAE-IS)

Check that your mobile number is correct.

Important Deadlines

Application	Deadline
<p>JAE to: Junior Colleges (JCs), Millennia Institute (MI), Polytechnics, and Institute of Technical Education (ITE)</p>	<ul style="list-style-type: none">• Online submission www.moe.gov.sg/jae Fri, 10 Jan 2025, 4.00 pm to Wed, 15 Jan 2025, 4.00 pm <p>You will need:</p> <ul style="list-style-type: none">➤ Singpass➤ Form A (lists your gross aggregate scores for JC, MI, polytechnic, ITE aggregate types and courses which you are eligible to apply for under the JAE)➤ JAE worksheet (template to prepare information for application) http://www.moe.gov.sg/jaeworksheet

Important Deadlines

Application	Deadline
JAE to: Junior Colleges (JCs), Millennia Institute (MI), Polytechnics, and Institute of Technical Education (ITE)	<ul style="list-style-type: none">• Release of posting results (via SMS and JAE-IS) <p style="text-align: center;">Tue, 4 Feb 2025</p>
	<ul style="list-style-type: none">• Acceptance of offer for <u>Junior College</u> or <u>Millennia Institute</u><ul style="list-style-type: none">• You must report to the JC/MI on Wed, 5 February 2025, in your school uniform and bring your original identification document• If not, your place will be forfeited• Acceptance of offer for <u>Polytechnic</u><ul style="list-style-type: none">• By end February, you will receive an email or card with enrolment instructions sent to your residential address.• You are required to complete your online enrolment by the deadline stated. If not, your place will be forfeited• Acceptance of offer for <u>ITE</u><ul style="list-style-type: none">• On the day of release of JAE posting results, you will receive an enrolment email from the Institute of Technical Education (ITE).• You must accept the course offer online by the date stated in the email. If not, your place will be forfeited

Important Deadlines

Application	Deadline
DSA-JC Polytechnic EAE ITE EAE	<ul style="list-style-type: none">• Students who had earlier accepted conditional offers and have met eligibility criteria for admission based on GCE O-Level Exam results<ul style="list-style-type: none">• You are not eligible for JAE application• You are to report to your chosen JC/Polytechnic/ITE and chosen course• Students who did not meet the eligibility criteria for admission are eligible for JAE application

Important Deadlines

Application	Deadline
DPP (Secondary 4N(A) students)	<ul style="list-style-type: none">• Online submission http://www.ite.edu.sg/apply-for-ite-courses Fri, 10 Jan 2025, 12.00 am to Tue, 14 Jan 2025, 11.59 pm• You can apply for Higher Nitec courses under the DPP based on a combination of your N-Level examinations results and O-Level examinations results.
	<ul style="list-style-type: none">• Release of posting results (DPP application portal) Wed, 17 Jan 2025, 9.00 am• Acceptance/ Rejection of offer (DPP application portal) Tue, 21 Jan 2025, 11.59 pm
	<ul style="list-style-type: none">• Report to ITE Wed, 22 January 2025

Important Deadlines

Application	Deadline
PFP (Secondary 4N(A) students)	<ul style="list-style-type: none">• Online submission (via PFP Website) https://pfp.polytechnic.edu.sg/PFP/index.html <p>Fri, 10 Jan 2025, 1.30 pm to Wed, 15 Jan 2025, 4.00 pm</p>
	<ul style="list-style-type: none">• Release of posting results (via PFP Website)• Acceptance/ Rejection of offer (via PFP Website) <p>Wed, 22 Jan 2025, 1.30 pm to Mon, 27 Jan 2025, 4.00 pm</p>
	<ul style="list-style-type: none">• If your result is successful and you have accepted the posting, you will be withdrawn from Secondary 5.
	<ul style="list-style-type: none">• Last day of school in BV <p>Fri, 31 Jan 2025</p>

The background is white with scattered black dots, small black stars, and thin black crescent moons. Three larger, five-pointed gold stars with white centers are positioned around the text: one at the top left, one at the top right, and one at the bottom center.

All the best!

Please come forward to get your results when your Form Teacher calls you up.



Start where you are. Use what you have.
Do what you can.

~ Arthur Ashe~



Ministry of Education
SINGAPORE