

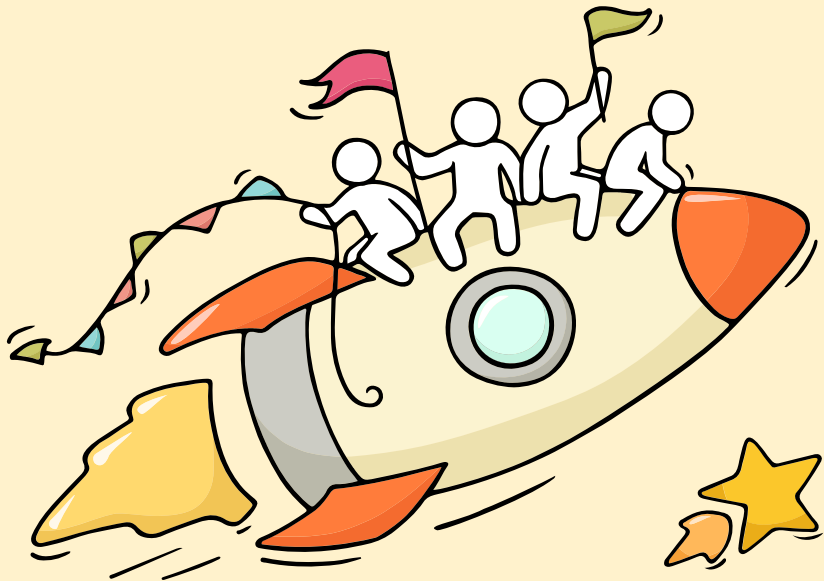
Welcome Back!

Briefing Slides for Release of 2024 N-Level Results



Dear students,

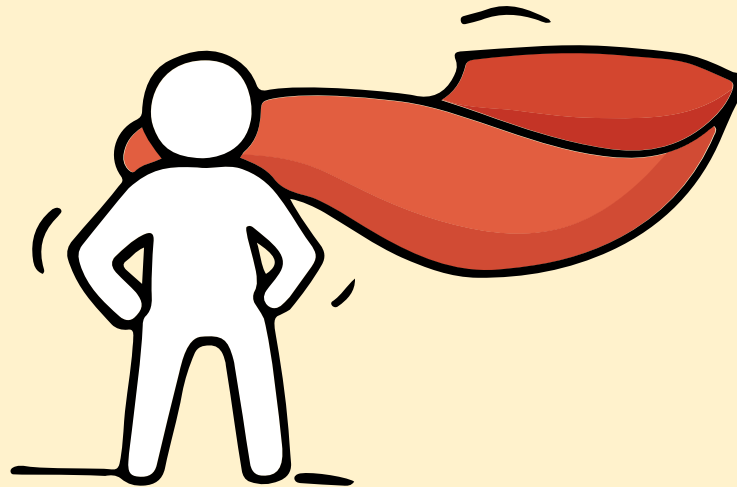
You have worked hard to reach this stage. Let's celebrate your efforts!



Finally, we are going to get our results!



Remember that while **everyone's educational journey is different, we can each have a fulfilling outcome!**



Resources to support you as you receive your results

Receiving your results and making decisions about your post-secondary pathways can be exciting to some, but stressful to others.

Scan this QR code for an infographic with some helpful resources to support you.



<https://go.gov.sg/nlevelstudentresource>



Thinking about Your Next Step?

Consider these questions...

Where do I want to go?

Who am I?

How Do I Get There?



In the infographic, you can find resources which can help you make informed decisions.

PLANNING YOUR NEXT STEP

These resources will help you chart your path ahead:



• What's Next Brochure

<https://go.gov.sg/whats-next-nlevel>



• Contact the ECG Centre @ MOE

<https://go.gov.sg/moe-ecg-centre>



• MySkillsFuture Student Portal

<https://go.gov.sg/MySFSec>







• Chat with your school's ECG Counsellor

Resources to help you make informed decisions



PLANNING YOUR NEXT STEP

These resources will help you chart your path ahead:

-  • **What's Next Brochure**
<https://go.gov.sg/whats-next-nlevel>
-  • **Contact the ECG Centre @ MOE**
<https://go.gov.sg/moe-ecg-centre>
-  • **MySkillsFuture Student Portal**
<https://go.gov.sg/MySFSec>
-  • **Chat with your school's ECG Counsellor**



MySkillsFuture Student Portal

Use the information and tools to explore various education and career pathways and take charge of your future.

Resources to help you make informed decisions

Post-Secondary Education

Learn more about the admissions exercises and programmes



<https://www.moe.gov.sg/post-secondary/admissions>

Learn more about the post-secondary education institutions



<https://moe.gov.sg/post-secondary/overview>

About Discover On My Way (D:OMW)

Discover your education and career interests and chart your personal and professional future with **Discover On My Way!** Explore different careers, connect with industry professionals and peers, and get firsthand exposure at various job roles. Let's get you on your way to discovering!

[Join Programmes!](#)

We know – deciding on which course to take and what career to pursue isn't easy... Through programmes organised by NYC and our partners, you'll be able to meet professionals from various industries and youth on the same journey as you.



Outward Bound Job Taster



Esports Events Management Job Taster



Career conversation and discovery



Concerned about your next steps?

Stop

- Calm yourself down. Take a few deep breaths.

Think

- Think through the different options that are available for you.
- Remember that the N-Level is not the end point and is only one part of your life journey.

Do


- Have conversations with trusted adults who know you well to advise and guide you (parents, teachers, ECG Counsellor).
- Decide and act based on your options.

When you receive your results, you may experience a range of emotions.

Managing these emotions well will allow you to stay calm and make rational decisions.

Reaching out for support is a sign of strength

If you have questions about your options or are not coping well, you can reach out to trusted adults such as a parent/guardian, teacher, School Counsellor or ECG Counsellor. You can also talk to a trusted friend.

An illustration showing two stylized human figures in white with black outlines. They are facing each other as if in conversation. Above them are two overlapping speech bubbles, one light green and one medium green. A large white thought bubble with a green outline is positioned above the figures, containing the text 'Who can we go to for ECG advice?'.

Who can we go to for ECG advice?

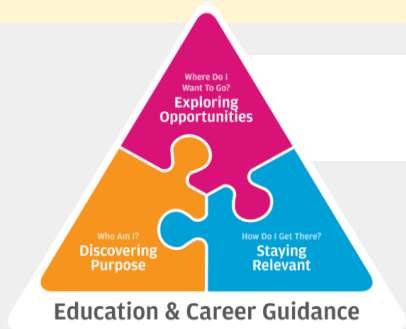
Make an appointment to speak with your ECG Counsellor in school
(Mr Teo Ming Wei – TP)

OR

Make an ECG counselling appointment via the ECG Centre @ MOE

<https://go.gov.sg/moe-ecg-centre>





Booking of Appointment with ECGC (BVSS)

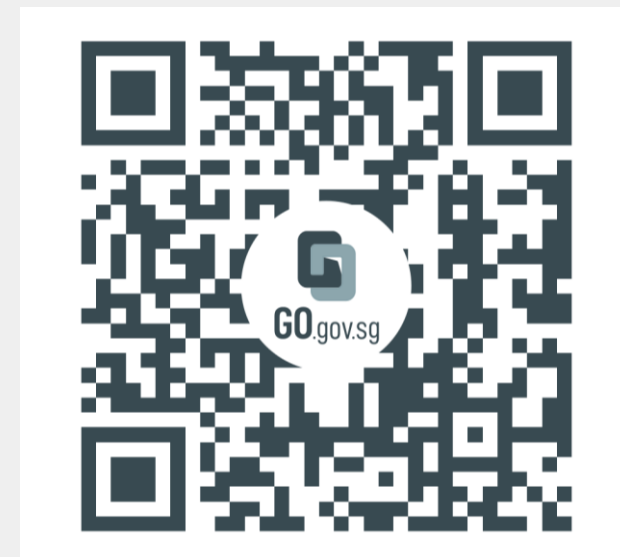
For N-level Results Release



Ms Evelyn See
ECG Counsellor

1. Slots will be available for **18 to 19 Dec**
2. You will receive a **confirmation email** on successful booking.
3. For zoom sessions, **zoom details** will be sent to you **via email**, in the morning of the session.

If there are **no more available slots**, you may **make an appointment with the MOE ECG Centre** through **go.gov.sg/moe-ecg-centre**



Online booking (via QR code)
(<https://go.gov.sg/ecgbvss-appt>)

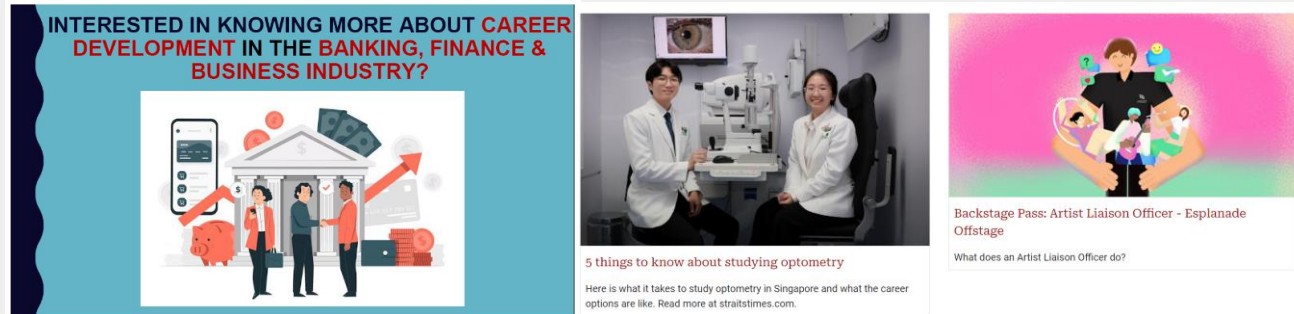


One-stop ECG InfoSite

Discover your Purpose | Explore Opportunities | Stay Relevant

Education and Career Guidance (ECG)

An ECG Microsite for students, teachers and parents!



<https://go.gov.sg/bvssecgsite>

Exciting ECG-related news articles, videos, websites and latest events e.g. career talks/seminars!



Useful Websites !

MOE Coursefinder

Website to explore all courses based on aggregate type, score, type of institution and area of interest

JIE 2024 Booklet

Detailed information about JIE and courses

JIE Overview

MOE website – JIE overview, application schedule and process

DPP Overview

MOE website – DPP overview, application schedule and process

PFP Overview

MOE website – PFP overview, application schedule and process



Having difficult emotions during a stressful and uncertain period is normal. Keep a look out for some of these signs:

Keep a lookout for some of these signs in your peers or in yourself

How can we support one another?



D

Deliberately avoiding others

I

Increased irritability, restlessness, agitation, stress and anxiety

S

Sending or posting moody messages on social media

T

Talking about death or dying

R

Reacting differently or gradually losing interest in things they used to like

E

Eating more than usual or having a much reduced appetite

S

Sleep pattern changes with difficulty falling asleep or oversleeping

S

Slowing down of energy levels

If you notice any of these signs in yourself or your friends, **have a chat with your School Counsellor or teacher,**

Or contact SOS 24-hour hotline at **1767** or SOS 24-hour CareText Whatsapp at **91511767**
For cyber wellness related matters, call Help123 at **1800-612-3123*** or email **hello@help123.sg**

**available only from Mon to Fri (excluding Public Holidays), from 9am - 6pm.*



Supporting Your Friend

- We may each experience different emotions upon receiving the results.
- You can share your friends' joy by congratulating them.
- If your friends appear to be disappointed with their results, encourage them.
- Alert a teacher if you are worried for them.



Keep a lookout for your friends in distress. You can support them in the following ways:



Support is readily available for you.

There are other hotlines and chats available if you are more comfortable seeking help using these platforms. These can also be found in the infographic which you accessed earlier.



SOS provides round-the-clock emotional support for those in distress, thinking of suicide or affected by suicide.

Call: **1767**
(24-hour helpline)

Whatsapp: **9151 1767**
(24-hour Care Text)

TOUCHline is a helpline to provide youths with emotional support and practical advice.

Call: **1800-377 2252**

*Monday- Friday (Excluding Public Holidays):
9am – 6pm*

Community Health Assessment Team

(CHAT) provides personalised and confidential mental health checks and consultation for youths. To speak with a youth support worker, you can:

Visit: **CHAT Hub at *Scape, 2 Orchard Link, #04-01A**

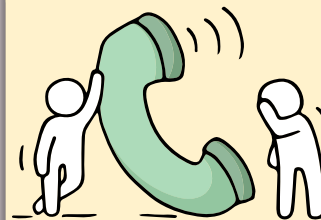
Call: **6493 6500/ 6501**

Email: **CHAT@mentalhealth.sg**

Carey is an online platform by Care Corner that provides free mental health check-ins with mental health professionals. Find out more at:
<https://carey.carecorner.org.sg/>

mindline.sg is an online platform that provides tools, tips and resources to help you manage your health and well-being. Find out more at:

www.mindline.sg



eC2 is an e-Counselling Centre where you can talk to a trained counsellor about the issues you are facing, right where you are.

Chat with a counsellor at:

www.ec2.sg

*Monday – Friday (Excluding Public Holidays):
10am – 12pm & 2pm – 5pm*



**The N-Level
examination is not
the end point.**

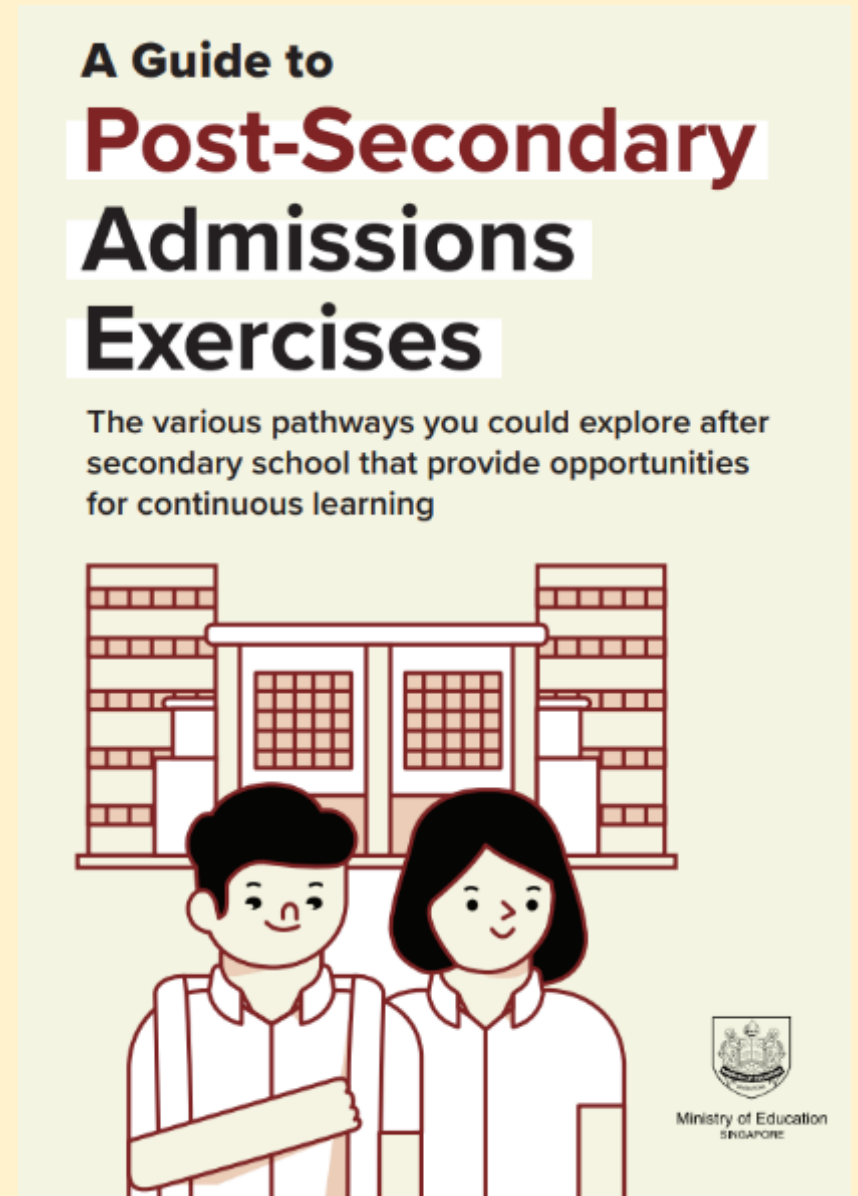
**It is part of your
education journey.**

Details of Admissions Exercises

You can find the details of the various admissions exercises from the **Post-Secondary Admissions Exercises booklet** that can be downloaded from:

<https://www.moe.gov.sg/post-secondary/admissions>

- DPP
- PFP
- Joint Intake Exercise 'N' / 'E'
- NAFA Foundation Programme



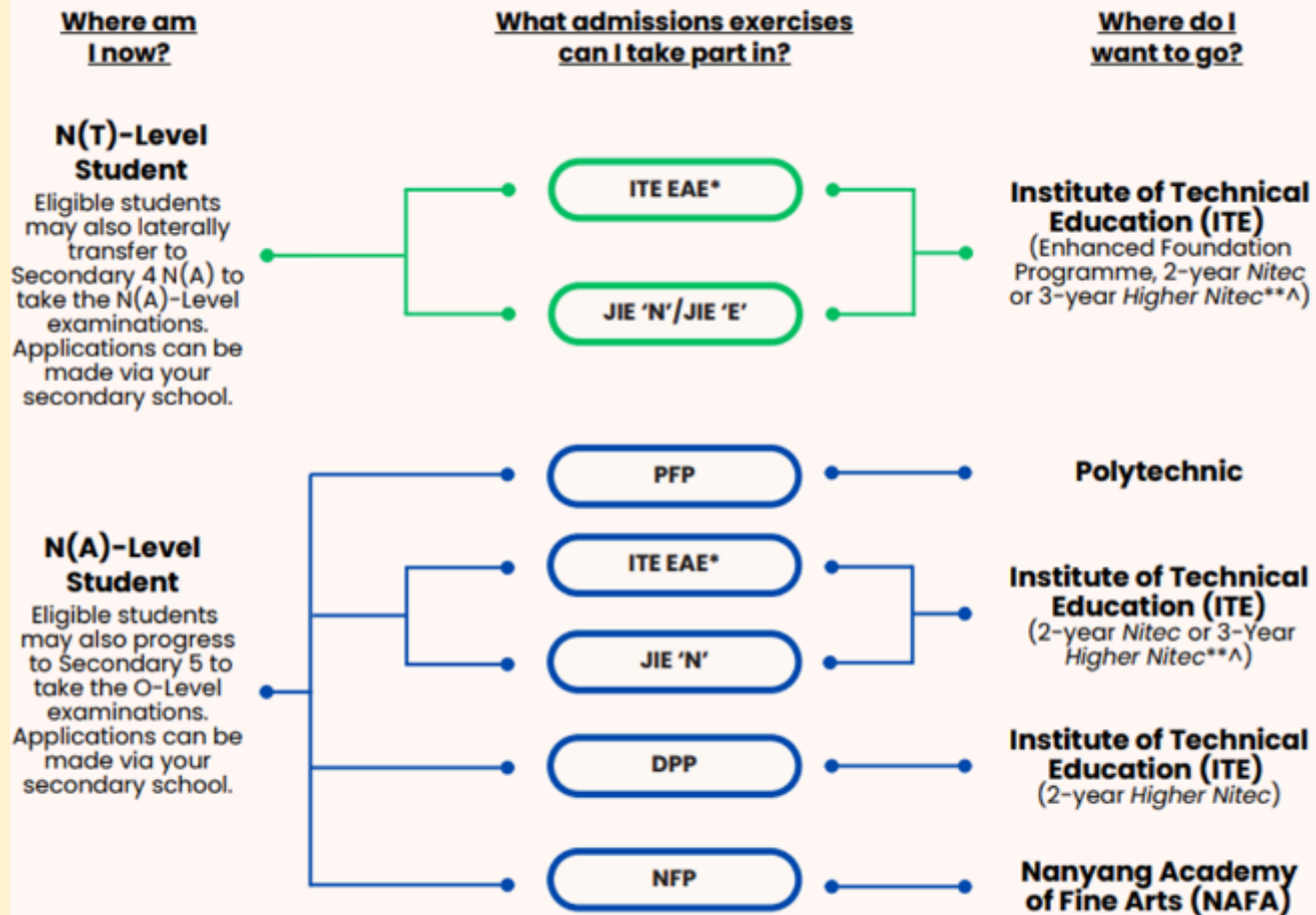
Admissions Exercises

Things to note





Post-Secondary Admissions Exercises for N-Level Students












<https://www.moe.gov.sg/post-secondary/admissions>

For more information on applying to these courses, you can visit <https://www.moe.gov.sg/post-secondary/admissions>

For the list of 3-year Higher Nitec courses, please visit <https://www.ite.edu.sg/courses/full-time-courses/nitec-and-3-year-higher-nitec>

Application Timeline

Admissions Exercises	JIE 'N'  	PFP 
	JIE 'E' 	DPP 
	NFP 	
	DPP 	
	(1 st window of applications)	(2 nd window of applications)
Application Period	Dec 2024	Jan 2025

 **N(T)–Level Student**
 **N(A)–Level Student**

Details of Admissions Exercises



JIE 'N'/JIE 'E' – Joint Intake Exercise

The JIE 'N' is for 2-year *Nitec* or 3-year *Higher Nitec* courses offered by ITE. The JIE 'E' is for GCE N(T) students to apply for the 3-year *Nitec* course with Enhanced *Nitec* Foundation Programme.

JIE 'N'/JIE 'E': go.gov.sg/applyjie



..... N(T)-Level Student



..... N(A)-Level Student

Details of Admissions Exercises



PFP – Polytechnic Foundation Programme

PFP is a one-year programme that offers a practice-oriented curriculum taught by polytechnic lecturers to better prepare polytechnic-bound Secondary 4 N(A) students for entry into selected polytechnic diploma courses. PFP students are given provisional places in diploma programmes, subject to them passing all modules in the one-year programme.

PFP: go.gov.sg/pfp



DPP – Direct-Entry-Scheme to Polytechnic Programme

DPP allows Secondary 4N(A) students to be admitted directly into selected 2-year *Higher Nitec* programmes at ITE without having to sit for the O-Level examinations or undergo a *Nitec* programme. DPP students who successfully complete their *Higher Nitec* courses at ITE and attain the required qualifying Grade Point Average (GPA) scores are guaranteed a place in a polytechnic diploma course mapped to their *Higher Nitec* course.

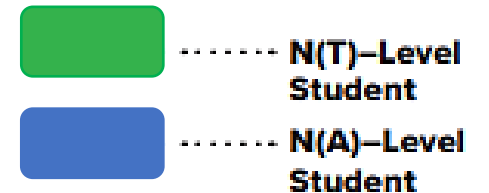
DPP: go.gov.sg/applydpp



NFP – NAFA Foundation Programme

NFP is a one-year practice-based programme that prepares N(A) Level holders to pursue a diploma in the creative arts. NFP students who successfully complete the programme will be offered a place in their chosen diploma course at NAFA.

NFP: go.gov.sg/applynafafp



For Students Considering Private Education



The 3Rs when deciding on Private Education

Reasons

- Why are you furthering your studies?
- What are the job prospects for your preferred course?

Readiness

- How ready are you to further your studies?
- Can you cope with the academic rigour and assignment deadlines?
- Can you fund your studies?

Risks

- Do you know the possible drawbacks?
 - Your expected returns may not exceed the investments you put into your private education.
 - Private schools may make exaggerated claims.
 - Private schools may close due to various reasons.
 - You may not get a full refund if you withdraw from your course.



8 Things You Should Know Before You Enrol in A Private School



School Registration

Ensure the school is registered with SkillsFuture Singapore (SSG). Review the school's registration period, expiry date and its overall registration track record.



Partner Institution

Research on the partner institution conferring the diploma or degree, and whether the qualification is recognised by the industry.

EduTrust Certification Scheme

Is the school EduTrust-certified*? Under the scheme, private schools are assessed for their performance in areas such as school management and provision of student support services.



**Schools are required to obtain EduTrust certification in order to offer external degree programmes*

School Premises

Head down to the campus ground to check the facilities and support services. Observe the study environment too.



Fee Protection



Ask if there is any course fee protection so that you will be able to recover unconsumed course fees should the school close down.

Beyond Course fees



Find out about the course syllabus and materials, graduation rates and employment prospects. Approach the alumni to find out what they think of the school.

Teachers

Check if the teachers are qualified to teach the course.



Internship

If industry attachment is included, find out which organisation you will be attached to, the period of attachment and the alternative arrangement should the attachment become unavailable. Verify the information with the organisation as well.



Summary of Key Information



Computing Aggregate Scores

Grade conversion for N(A) students who sat for GCE O-Level examinations.

O-Level Grade	N-Level Grade
A1, A2, B3	1
B4, C5, C6	2
D7	3
E8	4

Note: O-Level grade 9 does not count towards either the ELMAB3 aggregate score computation or in determining if minimum entry requirements for the PFP course have been met.

Instructions to Students

IMPORTANT

ALL students are to acknowledge the collection of the following items on the name list:

- GCE N-Level Result Slip
- GCE N-Level Certificate
- Form N (if applicable)

Check that your mobile number is correct.

Instructions to Students

All students are to submit your indication of progression options after the release of GCE N-Level Results using the link below.

Deadline is **Fri, 20 Dec 2024, 5pm**

<https://go.gov.sg/bvpathway2025>

The purpose of this form is for the school to collate all progression options and to plan for students who wish to progress to Secondary 5. The school is also required to update MOE of all students' post-secondary options.

Important Deadlines

Application	Deadline
ITE 2-Year <i>Nitec</i> & 3-Year <i>Higher Nitec</i> (Enhanced Curricular Structure)	<ul style="list-style-type: none">Online submission https://www.ite.edu.sg/apply-for-ITE-courses Mon, 16 Dec 2024, 2.30 pm to Thu, 19 Dec 2024, 5.00 pm (for courses under aptitude-based admissions – check ITE application portal for interview details from Fri, 20 Dec 2024)
	<ul style="list-style-type: none">Release of ITE posting results (via ITE application portal) Mon, 30 Dec 2024, from 9.00 am
	<ul style="list-style-type: none">Acceptance/ Rejection of offer (via ITE application portal) Mon, 30 Dec 2024 to Fri, 3 January 2025

Important Deadlines

Application	Deadline
DPP (receive Form N)	<ul style="list-style-type: none">• Online submission https://www.ite.edu.sg/ Mon, 16 Dec 2024, 2.30 pm to Thu, 19 Dec 2024, 5.00 pm• Will need to attend 10-week preparatory course prior to commencement of Higher Nitec Course
	<ul style="list-style-type: none">• Release of posting results (via ITE application portal) Fri, 20 Dec 2024
	<ul style="list-style-type: none">• Acceptance/ Rejection of offer (via ITE application portal) Fri, 20 Dec 2024 to Thu, 26 Dec 2024• Students with a confirmed place do <u>not</u> need to report to Bedok View• Students who do <u>not</u> have a confirmed place should report to Sec 5

Important Deadlines

Application	Deadline
PFP	<ul style="list-style-type: none"><li data-bbox="700 468 1949 516">• Students must report to Bedok View for Sec 5 first <p data-bbox="1141 592 2007 641">Thu, 2 Jan 2025 to Fri, 31 Jan 2025</p> <ul style="list-style-type: none"><li data-bbox="700 721 2390 826">• Notification of eligibility and application for PFP (Form P) in Jan 2025 after the release of 2024 O-Level Results
DPP (application after release of 2024 GCE O-Level Results)	<ul style="list-style-type: none"><li data-bbox="700 919 2109 968">• Students must report to Bedok View for Secondary 5 first <p data-bbox="1141 1043 2007 1092">Thu, 2 Jan 2025 to Fri, 31 Jan 2025</p>

Important Deadlines

Application	Deadline
Progression to 5N(A)	<ul style="list-style-type: none">• Report to Bedok View on Thu, 2 January 2025
Repeat 4N(A)	<ul style="list-style-type: none">• Students who wish to repeat Sec 4N(A) are to inform their FTs and indicate in the Progression Options Form after the release of the GCE N-Level results and submit by Fri, 20 Dec 2024, 5.00 pm https://go.gov.sg/bvpathway2025• The school will contact students to make the necessary arrangements for an interview.
All Students (after 2024 GCE N-Level Results)	<ul style="list-style-type: none">• Complete and Submit Progression Options (FormSG) to indicate progression to ITE EAE / ITE / DPP / PFP / 5N / Repeat 4N(A) by Fri, 20 Dec 2024, 5.00 pm https://go.gov.sg/bvpathway2025

Please note:

- All students who **only** intend to progress to Sec 5N (without choices to DPP, H-Nitec, Nitec) will have to **attend a briefing** by Mr Aziz on 19 Dec at 9am.
- Those who have indicated a desire to repeat, will also need to **arrange a meeting** with Mr Aziz by 23 Dec.

All our dreams can come true,
if we have the courage to pursue them.

--Walt Disney

D R E A M S





Ministry of Education
SINGAPORE