

2021 Singapore-Cambridge GCE N-Level Examinations Results Release

17 December 2021

**Miss Tan Yok Siew
External Exam i/c**



A SCHOOL OF HIGH STANDARDS, QUALITY LEARNING & HOLISTIC DEVELOPMENT

Respect • Responsibility • Integrity • Service • Excellence

CLASS OF 2021



WELCOME BACK!



A SCHOOL OF HIGH STANDARDS, QUALITY LEARNING & HOLISTIC DEVELOPMENT

Respect • Responsibility • Integrity • Service • Excellence

CELEBRATE EFFORTS!

The N-Level is a culmination of years of hard work and perseverance.

Let's celebrate our efforts regardless of the results.

Let's mark the end of the academic year by reflecting together on all our previous achievements in school and the challenges we have overcome!



A SCHOOL OF HIGH STANDARDS, QUALITY LEARNING & HOLISTIC DEVELOPMENT

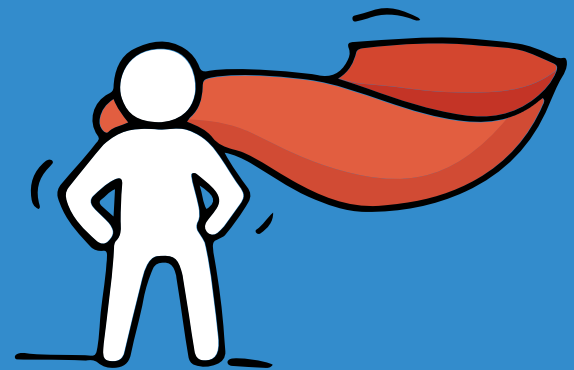
Respect • Responsibility • Integrity • Service • Excellence

Think Opportunities

As you await your GCE N-Level results, there are some possibilities:

- You are happy that your results meet your expectations,
- You are overjoyed that your results exceed your expectations, or
- You are worried/upset because your results fall short of your expectations.

Many pathways and opportunities!



Remember that **everyone's** learning journey is different but **we can each have a fulfilling outcome!**

Managing Your Emotions and Making Your Decisions

When you receive your results, you may feel overwhelmed by emotions. Managing these emotions well will allow you to stay calm and make rational decisions.



STOP

Stop any unhelpful thoughts or actions that would make you more upset. Inhale deeply and exhale slowly using 10 counts as you relax your muscles. Acknowledge your emotions.

THINK

Think through the different options that are available for you. Keep things in perspective. Remember that N-Level is just one part of your life journey and not the destination.

DO

Approach a trusted adult and seek his/her help. Have a conversation with this person about what would be best for you. Make a decision based on your options and take action.

Instructions to Students



A SCHOOL OF HIGH STANDARDS, QUALITY LEARNING & HOLISTIC DEVELOPMENT

Respect • Responsibility • Integrity • Service • Excellence

Instructions to Students

The following documents will be issued before the release of the 2021 GCE N-Level Exam results

1. JIE (ITE 2022 Intake Admission Booklet and brochures)
2. Post-Secondary Education Pathways booklet
3. What's Next pamphlet
4. Handouts on Fact Sheets and FAQs – DPP and PFP and Student Resource N-Level
5. RP PFP resource materials



A SCHOOL OF HIGH STANDARDS, QUALITY LEARNING & HOLISTIC DEVELOPMENT

Respect • Responsibility • Integrity • Service • Excellence

Instructions to Students

- All uncollected result slips and important materials can be collected from the General Office **from Friday, 17 December 2021, 4.00 pm – Monday, 20 December 2021, 12.00 pm.**
- General Office hours for collection of N-Level results and materials are **weekdays, 9.00 am – 3.00 pm** if the results and materials are not collected on Monday, 20 December 2021.



A SCHOOL OF HIGH STANDARDS, QUALITY LEARNING & HOLISTIC DEVELOPMENT

Respect • Responsibility • Integrity • Service • Excellence

Administrative Matters



A SCHOOL OF HIGH STANDARDS, QUALITY LEARNING & HOLISTIC DEVELOPMENT

Respect • Responsibility • Integrity • Service • Excellence

Administrative Matters

The following documents will be issued during the release of the 2021 GCE N-Level Exam results

- 1) Results slip
- 2) GCE N-Level Certificate
- 3) CCA Certificate
- 4) Form N (contains Pin no. for N(A) students eligible for ITE / *DPP* application)



A SCHOOL OF HIGH STANDARDS, QUALITY LEARNING & HOLISTIC DEVELOPMENT

Respect • Responsibility • Integrity • Service • Excellence

Administrative Matters

Collection of 2021 GCE N-Level Results slip and materials

Students are to sign on the Class list to acknowledge collection of the documents.

Update your parents and your mobile numbers for future updates.



A SCHOOL OF HIGH STANDARDS, QUALITY LEARNING & HOLISTIC DEVELOPMENT

Respect • Responsibility • Integrity • Service • Excellence

Administrative Matters

Important

Check personal particulars (Name, NRIC) on GCE N-Level certificate. Alert Form Teacher/s if there are any errors after you have collected the 2021 GCE N-Level results and the Certificate today.

Indicate the errors in pencil and the documents must be returned to your Form Teacher/s today.

A copy of the documents will be given to you for your applications for post-N-Level education.



A SCHOOL OF HIGH STANDARDS, QUALITY LEARNING & HOLISTIC DEVELOPMENT

Respect • Responsibility • Integrity • Service • Excellence

Administrative Matters

Important

Reprinting of Certificate will only be due to misspelling of the name of the student, if it is different from that in the School Cockpit.

- *Admin charge of S\$50 is levied by MOE HQ for reprinting of certificate*
- *Payment (CASH) must be submitted on **Monday, 20 December 2021, 12.00 pm** at the School Office*
- *The wrong Certificate must also be submitted*



A SCHOOL OF HIGH STANDARDS, QUALITY LEARNING & HOLISTIC DEVELOPMENT

Respect • Responsibility • Integrity • Service • Excellence

Pathways Ahead

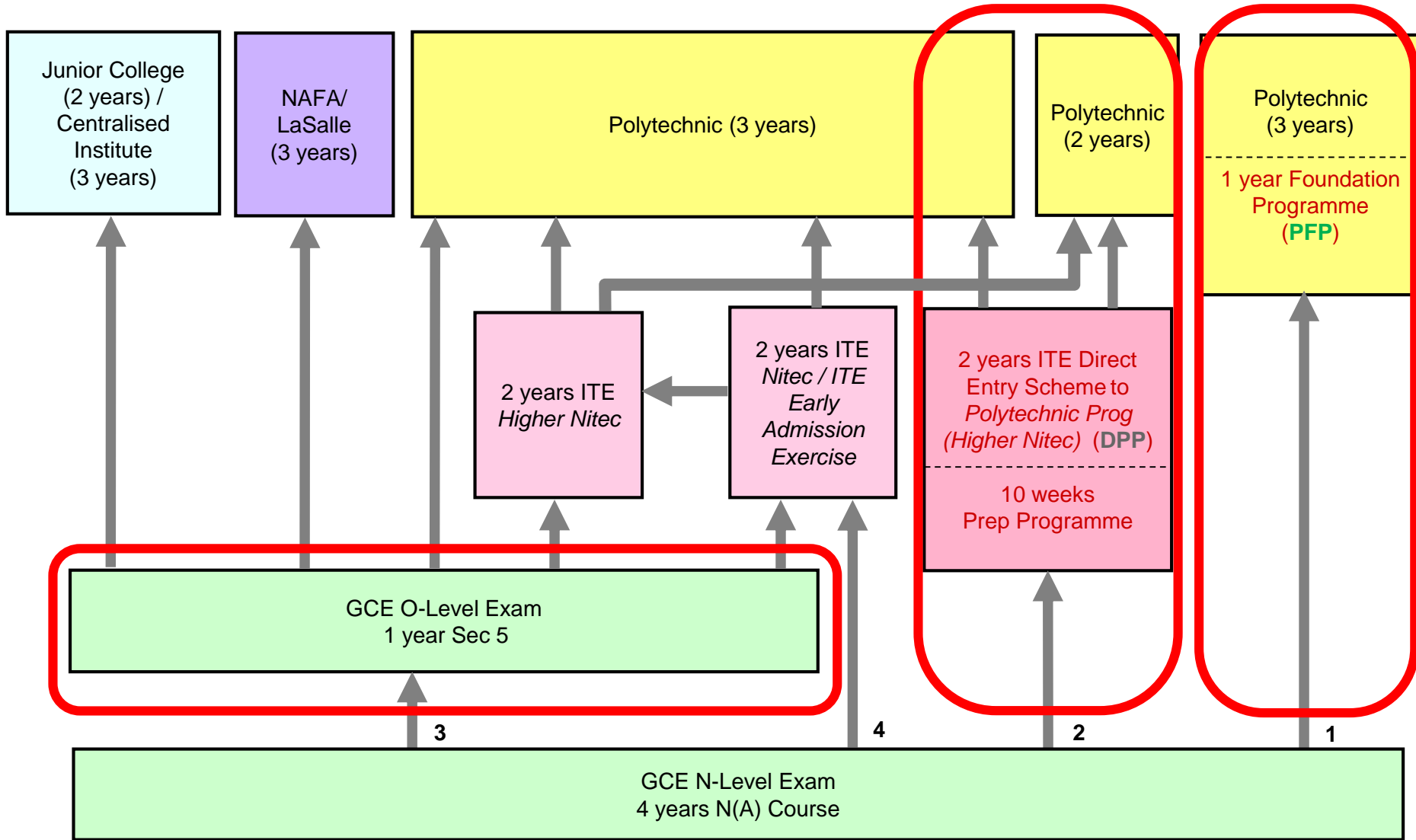


A SCHOOL OF HIGH STANDARDS, QUALITY LEARNING & HOLISTIC DEVELOPMENT

Respect • Responsibility • Integrity • Service • Excellence

Overview of Pathways

Pathways for Normal (Academic) Students



Pathways for your consideration

1. ITE (ITE EAE / 2-year *Nitec* / 3-year Enhanced Curricular Structure *Higher Nitec* for certain courses)
2. Direct-Entry-Scheme to Polytechnic Programme (DPP)
3. Polytechnic Foundation Programme (PFP)
4. Sec 5N(A) to take O-Level Exams

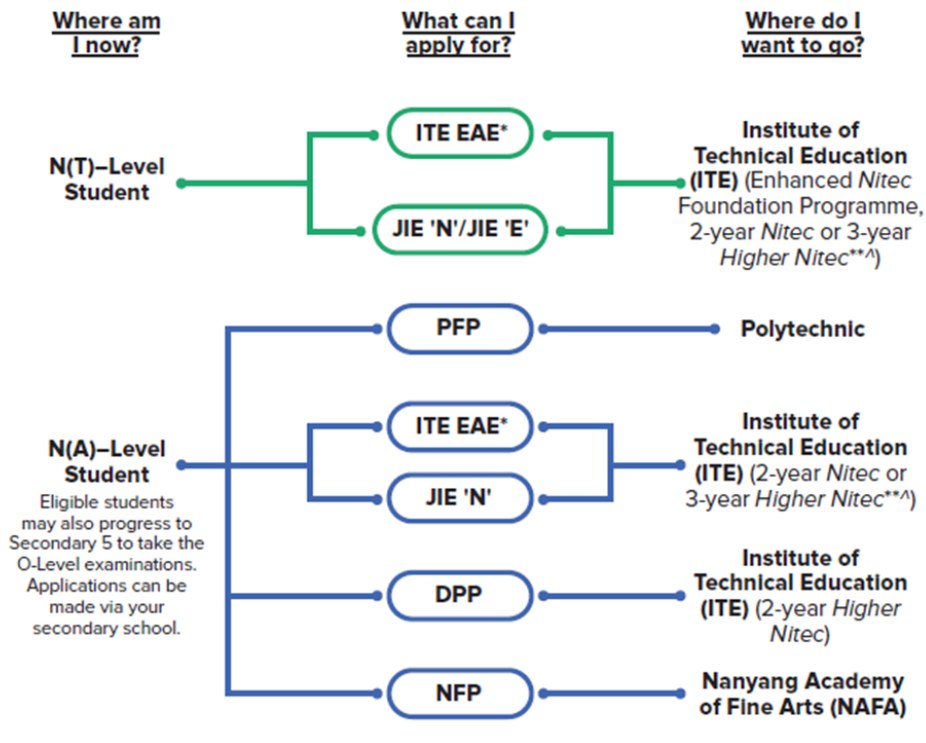


A SCHOOL OF HIGH STANDARDS, QUALITY LEARNING & HOLISTIC DEVELOPMENT

Respect • Responsibility • Integrity • Service • Excellence



Admissions Exercises for N-Level Students



<https://www.moe.gov.sg/post-secondary/admissions>



Source: A Guide to Post-Secondary Admissions Exercises

Details of Admission Exercises



DPP – Direct-Entry-Scheme to Polytechnic Programme

DPP allows secondary 4N(A) students to be admitted directly into a two-year *Higher Nitec* programme at ITE without having to sit for the O-Level examinations or undergo a *Nitec* programme. DPP students who successfully complete their *Higher Nitec* courses at ITE and attain the required qualifying Grade Point Average (GPA) scores are guaranteed a place in a polytechnic diploma course mapped to their *Higher Nitec* course.



go.gov.sg/dpp



NFP – NAFA Foundation Programme

NFP is a one-year practice-based programme that prepares N(A)-Level holders to pursue a diploma in the creative arts.



go.gov.sg/applynafafp



PFP – Polytechnic Foundation Programme

PFP is a one-year programme that offers a practice-oriented curriculum taught by polytechnic lecturers to better prepare polytechnic-bound N(A) students for entry into relevant polytechnic diploma courses. PFP students are given provisional places in diploma programmes, subject to them passing all modules in the one-year PFP.

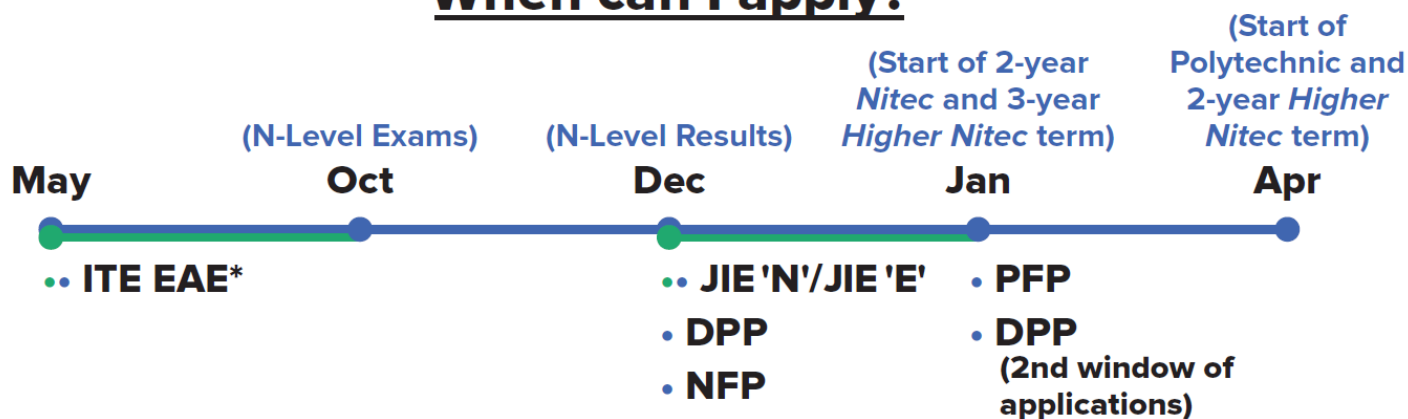


go.gov.sg/pfp

Admissions Exercises Application Timeline



When can I apply?



*Students can apply through these admissions exercises before their examinations.

**Certain *Nitec* and *Higher Nitec* courses are available in traineeship mode. For more information on applying to these courses, you can visit <https://www.ite.edu.sg/admissions/traineeship>

^There are eight 3-year Higher Nitec courses available for AY2022

Pathway 1
Early Admission Exercise
(ITE EAE) for
N(A) students

Pathway 1: ITE EAE

ITE EAE Offers to applicants

- Students who have applied for **ITE EAE** and would like to check their *Offer Status* can do so with their Form Teachers during the release of the 2021 GCE N-Level Exams Results.
- Students with a **confirmed ITE EAE offer** would be indicated as “successful” and would be able to check the course and college that they are posted to.



Pathway 1: ITE EAE

ITE EAE Offers to applicants

- Applicants who have accepted **ITE EAE** offers and have received the Confirmation offers are to honour the offers.
- Do not apply for 2-Year *Nitec and 3-Year Higher Nitec* courses for 2022 Joint Intake Exercise (JIE ITE).



A SCHOOL OF HIGH STANDARDS, QUALITY LEARNING & HOLISTIC DEVELOPMENT

Respect • Responsibility • Integrity • Service • Excellence

Pathway 1: ITE EAE

ITE EAE Offers to applicants

- Students who did not meet the minimum entry requirements (MERs) and had their **ITE EAE** offer revoked would be indicated as “unsuccessful”.
- They can be allowed to apply for the 2-Year *Nitec* and 3-Year *Higher Nitec* courses via the 2022 Joint Intake Exercise (JIE ITE).



A SCHOOL OF HIGH STANDARDS, QUALITY LEARNING & HOLISTIC DEVELOPMENT

Respect • Responsibility • Integrity • Service • Excellence

Pathway 1: ITE EAE

ITE EAE Offers to applicants

- Both successful and unsuccessful **ITE EAE** applicants can apply for Direct-Entry-Scheme to Polytechnic Programme (DPP) after the GCE N-Level results and/or Polytechnic Foundation Programme (PFP) after the GCE O-Level results, if they qualify.



A SCHOOL OF HIGH STANDARDS, QUALITY LEARNING & HOLISTIC DEVELOPMENT

Respect • Responsibility • Integrity • Service • Excellence

Pathway 1
ITE (*Nitec & Higher Nitec*) for
N(A) students

How to register for ITE?



A SCHOOL OF HIGH STANDARDS, QUALITY LEARNING & HOLISTIC DEVELOPMENT

Respect • Responsibility • Integrity • Service • Excellence

Pathway 1: ITE

How to register for ITE?

- Check eligibility and course listed in Results slip. (O-Level prelim results can be used for application)
- Consider interests
- Refer to Admission Booklet on guide to online application for
 - 2-year *Nitec* Courses (JIE 'N')
 - 3-year *Higher Nitec* Courses (Enhanced ITE Curricular Structure)



Pathway 1: ITE

How to register for ITE?

- Submit application via ITE application portal
<https://www.ite.edu.sg/apply-for-ITE-courses>

- Submission period :–

Friday, 17 December, 2021 2.30 pm

to

Tuesday, 21 December, 2021 5.00 pm



A SCHOOL OF HIGH STANDARDS, QUALITY LEARNING & HOLISTIC DEVELOPMENT

Respect • Responsibility • Integrity • Service • Excellence

Pathway 1: ITE

How to register for ITE?

- Hard copy application forms will also be available at the Customer & Visitor Centres at the three ITE Colleges.
- Applicants who wish to collect a hard copy application from the Customer & Visitor Centres should book an appointment first.



Pathway 1: ITE

How to register for ITE?

- Contact the respective colleges via the email addresses or phone numbers provided at <https://www.ite.edu.sg/who-we-are/get-in-touch>



A SCHOOL OF HIGH STANDARDS, QUALITY LEARNING & HOLISTIC DEVELOPMENT

Respect • Responsibility • Integrity • Service • Excellence

Pathway 1: ITE

How to register for ITE?

- Aptitude-based courses in ITE require shortlisted applicants to attend an interview.
- These courses are highlighted in the Admission Booklet.
- Check ITE application portal for interview details on **Wednesday, 22 December 2021, from 2.00 pm.**

For further enquiries, contact

ITE Hotline: 1800-2222-111



A SCHOOL OF HIGH STANDARDS, QUALITY LEARNING & HOLISTIC DEVELOPMENT

Respect • Responsibility • Integrity • Service • Excellence

Pathway 1: ITE

ITE posting results

- Check the posting results online via the ITE application portal on **Thursday, 30 December 2021.**
- Applicants who receive an ITE offer should log on to the ITE application portal to accept or reject the offer **Thursday, 30 December 2021**

-

Tuesday, 4 January 2022



A SCHOOL OF HIGH STANDARDS, QUALITY LEARNING & HOLISTIC DEVELOPMENT

Respect • Responsibility • Integrity • Service • Excellence

Pathway 1: ITE

Computation of ITE Aggregate Points for N(A) subjects

N(A) Grades	ITE Aggregate points
1, 2	1
3	2
4	3
5	4
U	5



A SCHOOL OF HIGH STANDARDS, QUALITY LEARNING & HOLISTIC DEVELOPMENT

Respect • Responsibility • Integrity • Service • Excellence

Pathway 2
Direct-Entry-Scheme to
Polytechnic Prog (DPP)
for N(A) students

DIRECT-ENTRY-SCHEME TO POLYTECHNIC PROGRAMME (DPP)

5 Things You Need to Know

1. What is the DPP?

- Prepares Sec 4N(A) students for progression into selected polytechnic diploma courses via a 2-year *Higher Nitec* programme at ITE, and a 10-week DPP preparatory course
 - Serves as an alternative to Sec 5
- Students who attain required *Higher Nitec* GPA scores are guaranteed a place in one of the polytechnic diploma courses mapped to the *Higher Nitec* course. (Refer to <https://www.ite.edu.sg/admissions/full-time-courses/higher-nitec-dpp> for course mapping.)
- About 1,200 places offered across 18 *Higher Nitec* courses

2. Am I Eligible for DPP 2022?

- Sec 4N(A) student who has sat for GCE N-Level exams in 2021
- Obtained ELMAB3 aggregate of 19 points or less (before deduction of CCA bonus points)
- Meet course-specific entry requirements
- If you can check all 3 boxes above, you're eligible!**
(Note: Being eligible to apply does not guarantee you a place in a DPP *Higher Nitec* course.)

If you have offered GCE O-Level examination subjects in 2021, you may refer to this table for the equivalent grade to compute your ELMAB3 aggregate:

GCE O-Level Grade	Converted Grade
A1-B3	1
B4-C6	2
D7-E8	3

3. How do I Apply?

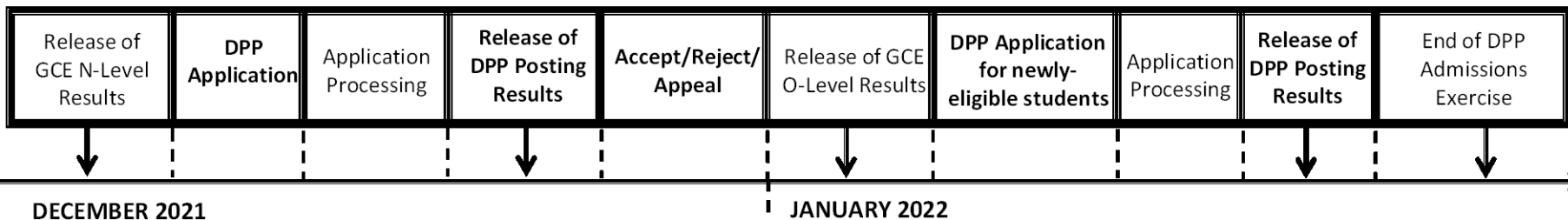
- Upon release of the GCE N-Level results, all DPP-eligible students may apply for DPP *Higher Nitec* courses via the ITE website (<https://www.ite.edu.sg>).
- You may select up to 12 course choices.
- Remember to provide updated contact details in your application to allow ITE to contact you if necessary.

4. How Will I be Informed of the Outcome?

- You should check your DPP posting results online on the morning of the release of the DPP posting results.
- You will then have to indicate if you wish to accept/reject/appeal the offer.
- If you do not accept the offer by the stipulated date, it will become void and you will be required to continue with your classes in Sec 5 or with your *Nitec* course if your application via JIE 'N' is successful

5. What Happens Next?

Upon accepting your DPP offer, you will attend a 10-week DPP preparatory programme that will start in Jan 2022.



Pathway 2: DPP

Direct-Entry-Scheme to Polytechnic Programme (DPP)

- Eligible 4N(A) students for DPP will receive a copy of Form N inviting them to apply for DPP.
- DPP-Eligible applicants can apply using their GCE N-Level results and O-Level prelim results to submit up to 12 course choices in their online application for DPP.
- Refer to the ITE Admission Booklet and Factsheets and FAQs for more information.



Pathway 2: DPP

Eligibility for application to DPP

ELMAB3 aggregate scores of **19 points or less** (excluding CCA bonus points) and **meet subject-specific Minimum Entry Requirements for each course (MERs)**

Applied Sciences, Engineering & Info-Comm Technology

- EL and Math - grade 4
- Best 3 subjects excluding CCA – grade 5

Business & Services

- EL – grade 3
- Math - grade 4
- Best 3 subjects excluding CCA – grade 5



A SCHOOL OF HIGH STANDARDS, QUALITY LEARNING & HOLISTIC DEVELOPMENT

Respect • Responsibility • Integrity • Service • Excellence

Pathway 2: DPP

Direct-Entry-Scheme to Polytechnic Programme (DPP)

- Submit application via ITE application portal
<https://www.ite.edu.sg/apply-for-ITE-courses>

Submission period :—

**Friday, 17 December, 2021 2.30 pm
to**

Tuesday, 21 December, 2021 5.00 pm



A SCHOOL OF HIGH STANDARDS, QUALITY LEARNING & HOLISTIC DEVELOPMENT

Respect • Responsibility • Integrity • Service • Excellence

Pathway 2: DPP

DPP posting results

- Check the posting results online via the ITE application portal on **Thursday, 23 December 2021.**
- Applicants who receive a DPP offer should log on to the ITE application portal to accept or reject the offer **Thursday, 23 December 2021**

-

Tuesday, 28 December 2021



A SCHOOL OF HIGH STANDARDS, QUALITY LEARNING & HOLISTIC DEVELOPMENT

Respect • Responsibility • Integrity • Service • Excellence

Pathway 2: DPP

DPP posting results

- Applicants who have accepted their DPP offer in December **need not report for Sec 5N(A).**
- Applicants who do not have a confirmed place in the DPP but are eligible for progression to Secondary 5N(A) should report to Bedok View on **Tuesday, 4 January 2022 for Secondary 5N(A).**



Pathway 2: DPP

DPP posting results

- Newly eligible DPP applicants may apply in January 2022 after the release of the GCE O-Level Exam results.
- For more information on the Direct-Entry-Scheme to Polytechnic Programme (DPP):-

<https://www.ite.edu.sg/admissions/full-time-courses/higher-nitec-dpp>



A SCHOOL OF HIGH STANDARDS, QUALITY LEARNING & HOLISTIC DEVELOPMENT

Respect • Responsibility • Integrity • Service • Excellence

Pathway 3

Polytechnic Foundation Prog (PFP)

for N(A) students



A SCHOOL OF HIGH STANDARDS, QUALITY LEARNING & HOLISTIC DEVELOPMENT

Respect • Responsibility • Integrity • Service • Excellence

POLYTECHNIC FOUNDATION PROGRAMME (PFP)

Essential Things You Need to Know

1. What is the PFP?

- A foundation year at the polytechnics that:
 - Prepares well-performing Sec 4N(A) students for progression into respective polytechnic diploma courses
 - Serves as an alternative to Sec 5
- Conducted over two academic semesters at the polytechnics
- Students must pass all PFP modules in order to progress to their respective, pre-selected diploma courses.

2. Am I Eligible for PFP 2022?

You are eligible for the PFP if you:

- Sat for GCE N-Level exams as a school candidate in 2021
- Have obtained an ELMAB3 aggregate of 12 points or less (before deduction of CCA bonus points)
- Met course-specific entry requirements as listed on the PFP website

If you can check all 3 boxes above, you're eligible!
(Note: Eligibility does not guarantee you a place in a PFP course)

If you had offered GCE O-Level examination subjects in 2021, you may refer to this table for the equivalent grade to compute your ELMAB3 aggregate:

GCE 'O' Level Grade	Converted Grade
A1-B3	1
B4-C6	2
D7	3

3. How do I Apply?

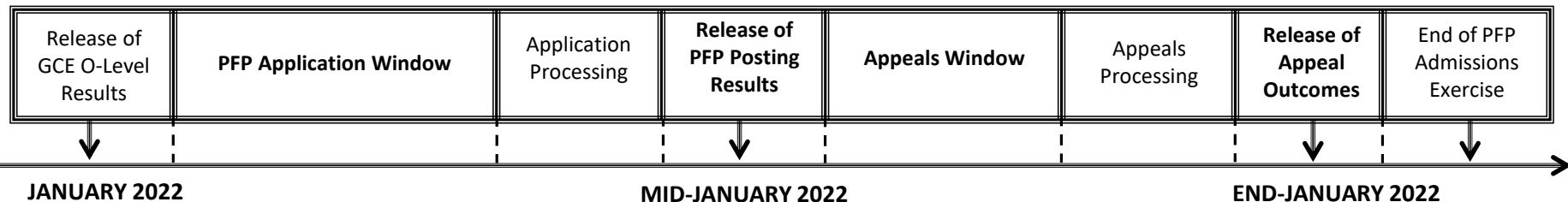
- Upon release of the GCE O-Level results, all PFP-eligible students will receive Form P containing a PFP PIN that allows them to apply for the PFP at this [link](#).
- You may select up to five course choices.
- Remember to provide updated contact details in your application to allow the polytechnics to contact you if necessary.
(Note: You should continue to attend Sec 5 from 4 January 2022 while applying for PFP.)

4. How Will I be Informed of the Outcome?

- You should log in to the PFP portal to check your application outcomes on the day of PFP posting results release.
- You will then have to indicate if you wish to accept/reject/appeal the offer.
- If you do not select any option, your offer will become invalid and you will be required to continue with your classes in Sec 5.
(Note: If your appeal is successful, your original offer will be void regardless of whether you accept the new PFP offer.)

5. What Happens Next?

- If you accept your offer, you will receive an enrolment package from the polytechnics in February/March 2022.
- The PFP year will start in April 2022.



Pathway 3: PFP

Polytechnic Foundation Programme (PFP)

- Applicants interested in applying for the PFP should first report to Bedok View on **Tuesday 4 January 2022** to start their Secondary 5N(A), while awaiting notification of eligibility and confirmation of a place in the PFP.



A SCHOOL OF HIGH STANDARDS, QUALITY LEARNING & HOLISTIC DEVELOPMENT

Respect • Responsibility • Integrity • Service • Excellence

Pathway 3: PFP

Polytechnic Foundation Programme (PFP)

- PFP-Eligible 4N(A) students will be invited to apply for the PFP in January 2022 on the day of the release of the 2021 GCE O-Level Exams results.
- Application period :-
on the day of the release of the 2021 GCE O-Level Exams Results at 2.00 pm - Day 6 at 4.00 pm.



A SCHOOL OF HIGH STANDARDS, QUALITY LEARNING & HOLISTIC DEVELOPMENT

Respect • Responsibility • Integrity • Service • Excellence

Pathway 3: PFP

Polytechnic Foundation Programme (PFP)

- Eligible students will receive a copy of **Form P** inviting them to apply for the PFP.
- It will include the following:
 - Computed raw **ELMAB3** aggregate scores **excluding CCA points**
 - List of PFP courses students are eligible to apply for

A unique Pin code



A SCHOOL OF HIGH STANDARDS, QUALITY LEARNING & HOLISTIC DEVELOPMENT

Respect • Responsibility • Integrity • Service • Excellence

Pathway 3: PFP

Polytechnic Foundation Programme (PFP)

- Students should select up to 5 choice courses in their **online** application.
- Posting results will be released 4 days after the close of the application period.
- Students must log on to the PFP portal for the application outcome.



Pathway 3: PFP

Polytechnic Foundation Programme (PFP)

- Successful applicants will be offered a provisional place in the diploma course applied for, and will be posted to the corresponding PFP for that course.
- Successful applicants have **3 working days** to
Accept – proceed to PFP
Reject – continue in Sec 5N(A)
Appeal – change of PFP course



Pathway 3: PFP

Eligibility for application to PFP

ELMAB3 aggregate not exceeding **12 points (excluding CCA bonus points)**

meet subject-specific Minimum Entry Requirements (MERs)

(Group 1 courses)

- EL and Math \leq grade 3
- 1 relevant subject = Science/ F & N / D & T \leq grade 3
- 2 Best subjects \leq grade 3



A SCHOOL OF HIGH STANDARDS, QUALITY LEARNING & HOLISTIC DEVELOPMENT

Respect • Responsibility • Integrity • Service • Excellence

Pathway 3: PFP

Eligibility for application to PFP

(Group 2 courses)

- EL \leq grade 2
- Math \leq grade 3
- 1 relevant subject = POA / Hum / Geography / Art \leq grade 3
- 2 Best subjects \leq grade 3



A SCHOOL OF HIGH STANDARDS, QUALITY LEARNING & HOLISTIC DEVELOPMENT

Respect • Responsibility • Integrity • Service • Excellence

Pathway 3: PFP

Polytechnic Foundation Programme (PFP)

- For details on the various PFP courses offered and their specific subject score requirements, visit

https://pfp.polytechnic.edu.sg/PFP/pfp_eligibility.html

- For the list of polytechnic diploma courses in Group 1
Group 2

https://pfp.polytechnic.edu.sg/PFP/pfp_courses.html

- PFP-Eligible students are to submit an application via the PFP portal

<https://pfp.polytechnic.edu.sg/PFP/index.html>



A SCHOOL OF HIGH STANDARDS, QUALITY LEARNING & HOLISTIC DEVELOPMENT

Respect • Responsibility • Integrity • Service • Excellence

Pathway 3: PFP

Polytechnic Foundation Programme (PFP)

- Successful applicants **MUST** report to Bedok View and attend 5N(A) from **Tuesday, 4 January 2022 to Friday, 28 January 2022.**
- The polytechnics will contact successful PFP-bound students who have accepted the Offer regarding enrolment and matriculation in February / March 2022.



A SCHOOL OF HIGH STANDARDS, QUALITY LEARNING & HOLISTIC DEVELOPMENT

Respect • Responsibility • Integrity • Service • Excellence

For students who are interested in BOTH the DPP and PFP:

- Students will progress to Sec 5N(A) first. Eligible students can apply for both DPP and PFP upon release of the GCE O-Level results in January 2022.
- If their applications to the PFP and DPP are successful, they can only accept 1 course offer. Students who accept both DPP and PFP offers will have both offers voided.



For students who are interested in BOTH the DPP and PFP:

- If the student initially accepted the DPP offer and now wishes to accept his/her PFP offer then he/she **MUST withdraw from the DPP course first before accepting the PFP offer.**
- Students will withdraw from Sec 5N(A) on **Monday, 24 January 2022 for DPP** and **Friday, 28 January 2022 for PFP.**



Pathway 4

Sec 5N(A) to take O-Levels



A SCHOOL OF HIGH STANDARDS, QUALITY LEARNING & HOLISTIC DEVELOPMENT

Respect • Responsibility • Integrity • Service • Excellence

Pathway 4: Sec 5N(A) to take O-Levels

Eligibility for promotion to Sec 5N(A)

- **ELMAB3** (EL, Math and best 3 other subjects)
Aggregate score of **19 points or less** in the GCE N-Level Exam.
- At least an N(A)-level grade 5 for all subjects used in the computation of **ELMAB3**.



A SCHOOL OF HIGH STANDARDS, QUALITY LEARNING & HOLISTIC DEVELOPMENT

Respect • Responsibility • Integrity • Service • Excellence

Pathway 4: Sec 5N(A) to take O-Levels

Eligibility for promotion to Sec 5N(A)

Consider options carefully!

- It has become increasingly popular for N(A) students not to go to Sec 5N(A) as there are many more choices for them to pursue and do well in their post-secondary pathways.
- Obtain information what needs to be done to prepare for Sec 5N(A) in 2022.



A SCHOOL OF HIGH STANDARDS, QUALITY LEARNING & HOLISTIC DEVELOPMENT

Respect • Responsibility • Integrity • Service • Excellence

Repeat Sec 4N(A)



A SCHOOL OF HIGH STANDARDS, QUALITY LEARNING & HOLISTIC DEVELOPMENT

Respect • Responsibility • Integrity • Service • Excellence

Application Process to Repeat Secondary 4N(A)

Students who wish to repeat Secondary 4N(A) are to indicate in the Progression Options Form (FormSG) and submit by **Wednesday, 22 December 2021, 5.00 pm.**

Mr Azuan Tan will contact them to make the necessary arrangements.



A SCHOOL OF HIGH STANDARDS, QUALITY LEARNING & HOLISTIC DEVELOPMENT

Respect • Responsibility • Integrity • Service • Excellence

Application Process to Repeat Secondary 4N(A)

Students will attend an interview with the Vice-Principal. They are to bring their results slip and report book. Their parents / guardian must accompany them and be present during the interview session.



A SCHOOL OF HIGH STANDARDS, QUALITY LEARNING & HOLISTIC DEVELOPMENT

Respect • Responsibility • Integrity • Service • Excellence

Administrative Matters

Indication of Progression Options after GCE N-Level Release of Results (FormSG)

The purpose of the form is for **all students** to indicate their progression options after the GCE N-Level release of results. It is important to complete the form and submit it by **Wednesday, 22 December 2021, 5.00 pm.**

The link <https://form.gov.sg/6195e8599b454c0015f6f7cc> is in the Parent Gateway announcement sent on Wednesday 15 December 2021.





A SCHOOL OF HIGH STANDARDS, QUALITY LEARNING & HOLISTIC DEVELOPMENT

Respect • Responsibility • Integrity • Service • Excellence

Additional Information For Students

The information listed in the table below will help you to make an informed decision on which choice of courses you could consider applying at ITE.

S/N	Information	Attachment/Link
1	ITE Factsheet 2021	 ITE Factsheet 2021
2	ITE Course Booklet 2022	https://www.ite.edu.sg/docs/default-source/full-time-courses-doc/ite-course-booklet-2022
3	3-Year <i>Enhanced Higher Nitec</i> curricular structure for certain courses	 annex-a-enhanced-ite-curricular-structure-apr-2021.pdf
4	ITE Traineeship Course Booklet 2022	https://www.ite.edu.sg/docs/default-source/traineeship/ite-traineeship-e-booklet_2022.pdf
5	Information on Progression Opportunities (From <i>Nitec</i> Courses to <i>Higher Nitec</i> and Technical Diploma Courses)	https://www.ite.edu.sg/admissions/full-time-courses/nitec/progression-opportunities
6	Information on Graduate Employment Survey	https://www.ite.edu.sg/admissions/graduate-employment-survey

Key Dates for Jan 2022 Intake Exercise (Full-time *Nitec* Courses)

Key Activity	Period for 2-Year and 3-Year <i>Nitec</i> Courses, and 3-Year <i>Higher Nitec</i> courses	Remarks
1st Phase (Main Phase)		
Application	17 Dec 2021 (2.30pm) to 21 Dec 2021 (5pm)	Apply through the Internet at https://www.ite.edu.sg with NRIC / FIN and Date of Birth. You may also apply using SingPass.
Release of Results	30 Dec 2021 at 9am	Check results at https://istudent.ite.edu.sg with web ID and password
Acceptance of Course Offer Period	30 Dec 2021 to 4 Jan 2022	Accept course offer at https://istudent.ite.edu.sg with web ID and password
2nd Phase (Late Application/Appeal Phase)		
Application	30 Dec 2021 to 4 Jan 2022	Apply through the Internet at https://istudent.ite.edu.sg with NRIC / FIN and Date of Birth. You may also apply using SingPass.
Release of Results	11 Jan 2022 at 9am	Check results at https://istudent.ite.edu.sg with web ID and password
Acceptance of Course Offer Period	11 Jan 2022 to 13 Jan 2022	Accept course offer at https://istudent.ite.edu.sg with web ID and password
3rd Phase (Final Top-up Phase)		
Application	1 st Top-up Phase Application - 11 Jan to 20 Jan 2022 2 nd Top-up Phase Application - 26 Jan to 8 Feb 2022	Apply through the Internet at https://istudent.ite.edu.sg with NRIC / FIN and Date of Birth. You may also apply using SingPass.
Release of Results	1 st Top-up Phase - 14 Jan to 26 Jan 2022 2 nd Top-up Phase - 26 Jan to 15 Feb 2022	Check results at https://istudent.ite.edu.sg with web ID and password
Acceptance of Course Offer Period	1 st Top-up Phase - 14 Jan to 26 Jan 2022 2 nd Top-up Phase - 26 Jan to 15 Feb 2022	Accept course offer at https://istudent.ite.edu.sg with web ID and password

Jan 2022 Intake Term Commencement Date: 10 Jan 2022

Important Deadlines

Application	Deadline
ITE 2-Year <i>Nitec</i> & ITE 3-Year <i>Higher Nitec</i> (Enhanced Curricular Structure)	<ul style="list-style-type: none">• Online submission• https://www.ite.edu.sg/apply-for-ITE-courses Friday, 17 December 2021, 2.30 pm - Tuesday, 21 December 2021, 5.00 pm
ITE 2-Year <i>Nitec</i> & ITE 3-Year <i>Higher Nitec</i> (Enhanced Curricular Structure)	<ul style="list-style-type: none">• Release of application results Thursday, 30 December 2021, from 9.00am
ITE 2-Year <i>Nitec</i> & ITE 3-Year <i>Higher Nitec</i> (Enhanced Curricular Structure)	<ul style="list-style-type: none">• Acceptance / Reject offer Thursday, 30 December 2021 - Tuesday, 4 January 2022

Important Deadlines

Application	Deadline
DPP (receive Form N)	<ul style="list-style-type: none">• Online submission• https://www.ite.edu.sg/apply-for-ITE-courses Friday, 17 December 2021, 2.30 pm - Tuesday, 21 December 2021, 5.00 pm
DPP	<ul style="list-style-type: none">• Release of application results Thursday, 23 December 2021, from 9.00 am
DPP	<ul style="list-style-type: none">• Acceptance / Reject offer Thursday, 23 December 2021 - Tuesday, 28 December 2021 <p>No need to report to Bedok View, if accept offer</p>

Important Deadlines

Application	Deadline
PFP	<ul style="list-style-type: none">• Progress to Sec 5N(A) first• Students must report to Bedok View for Sec 5N(A) Tuesday, 4 January 2022 - Friday, 28 January 2022• Notification of eligibility and application for PFP in January 2022 after the release of O-Level Results
DPP (application after 2021 GCE O- Level Exam Results)	<ul style="list-style-type: none">• Progress to Sec 5N(A) first• Students must report to Bedok View for Sec 5N(A) Tuesday, 4 January 2022 - Monday, 24 January 2022

Important Deadlines

Application	Deadline
PFP (application after 2021 GCE O-Level Exam Results) (receive Form P)	<ul style="list-style-type: none"><li data-bbox="426 289 1904 468">• Online Application Day of release of GCE O-Level results 2.00 pm to Day 6 at 4.00 pm
PFP	<ul style="list-style-type: none"><li data-bbox="426 882 1557 1061">• Posting results 4 working days after close of Application. (more information will be given in 2022)
PFP	<ul style="list-style-type: none"><li data-bbox="426 1189 1508 1368">• Acceptance / Reject Offer 3 working days after Posting results (more information will be given in 2022)

Important Deadlines

Application	Deadline
Repeat 4N(A)	<ul style="list-style-type: none">• Students who wish to repeat Secondary 4N(A) are to indicate in the Progression Options (FormSG) after the release of the GCE N-Level results and submit by Wednesday, 22 December 2021, 5.00 pm.• Mr Azuan Tan will contact the students to make the necessary arrangements.
All Students (after 2021 GCE N-Level Results)	<ul style="list-style-type: none">• Complete and Submit Progression Options (FormSG) to indicate progression to ITE EAE / ITE / DPP / PFP / 5N / Repeat 4N(A) by Wednesday, 22 December 2021, 5.00 pm.

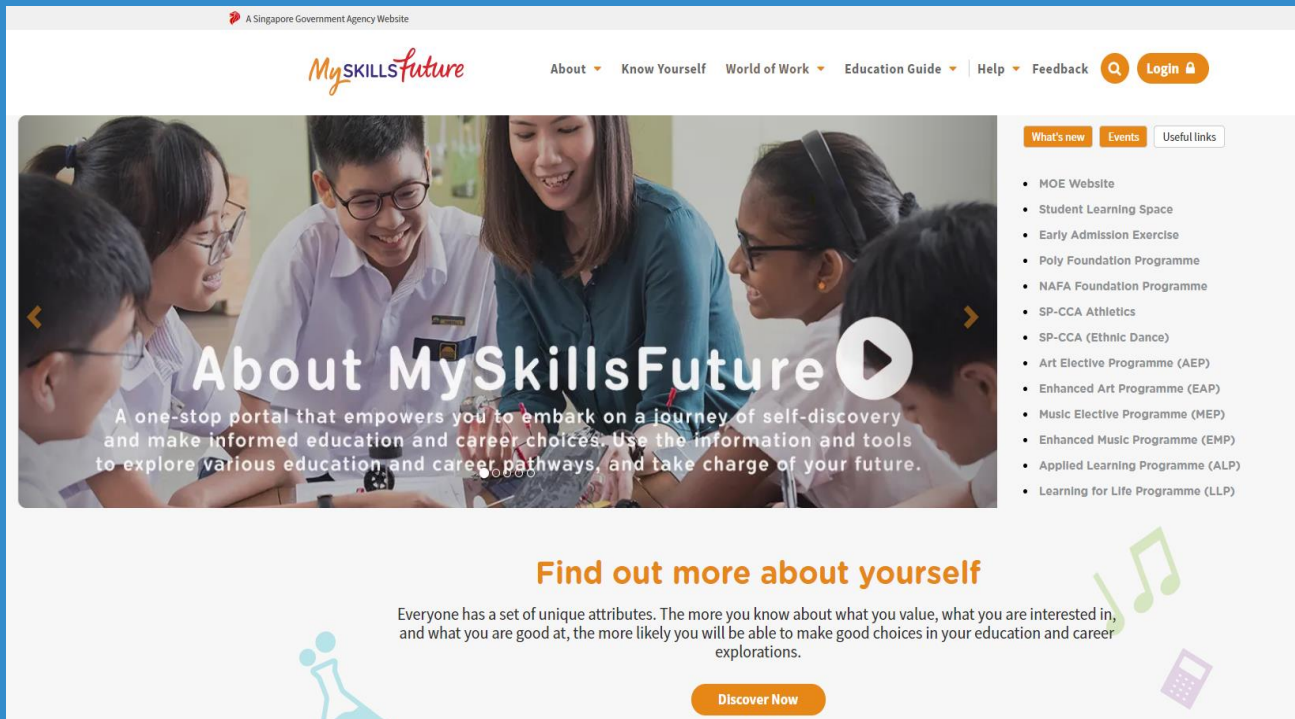
For ECG Counselling, please make an appointment with Mdm Tay, School ECG counsellor, via the link <https://go.gov.sg/nlevel> or QR code



<https://go.gov.sg/nlevel>

MySkillsFuture Student Portal (Secondary)

Visit <https://go.gov.sg/MySFSec> for more information on post-GCE N-Level options



A Singapore Government Agency Website

MySKILLSFuture

About Know Yourself World of Work Education Guide Help Feedback Login

What's new Events Useful links

- MOE Website
- Student Learning Space
- Early Admission Exercise
- Poly Foundation Programme
- NAFA Foundation Programme
- SP-CCA Athletics
- SP-CCA (Ethnic Dance)
- Art Elective Programme (AEP)
- Enhanced Art Programme (EAP)
- Music Elective Programme (MEP)
- Enhanced Music Programme (EMP)
- Applied Learning Programme (ALP)
- Learning for Life Programme (LLP)

About MySkillsFuture

A one-stop portal that empowers you to embark on a journey of self-discovery and make informed education and career choices. Use the information and tools to explore various education and career pathways, and take charge of your future.

Find out more about yourself

Everyone has a set of unique attributes. The more you know about what you value, what you are interested in, and what you are good at, the more likely you will be able to make good choices in your education and career explorations.

Discover Now



ECG Resources

POST-SECONDARY EDUCATION

Pursuing pathways that fit your interests, abilities and aspirations



Post-Secondary Education booklet

Students can learn more about the post-secondary landscape at

<http://ost-sec.moe.gov.sg/pview>



A Guide to Post-Secondary Admissions Exercises

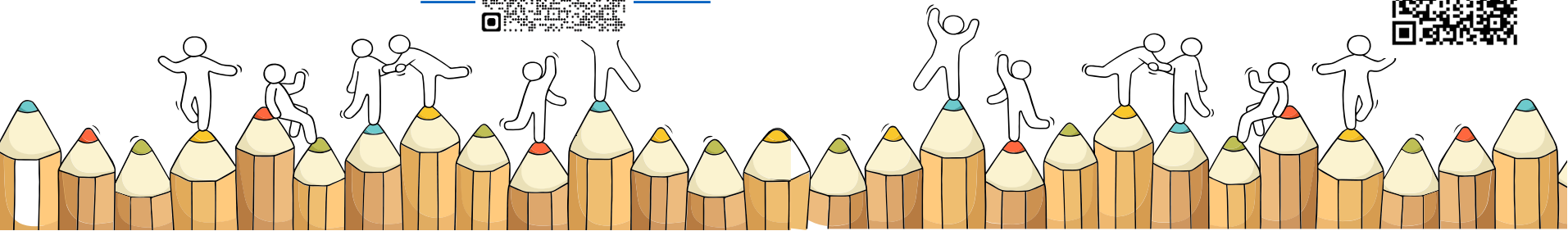
A list of pathways you could consider after secondary school that provide opportunities for continuous learning



Post-Secondary Admissions Exercises booklet

A list of pathways that students could consider after secondary school

<https://www.moe.gov.sg/post-secondary/adr>



ECG Resources




Students can find articles, videos on different professions, and connect with tertiary seniors and young professionals through sharing sessions with National Youth Council's On My Way (OMW)



<https://go.gov.sg/omw2022>

<https://go.gov.sg/omw2022>
22

KNOW IT ALL COPY URL TO SHARE



INVESTMENT BANKER

Investment Bankers sell securities and provide strategic advice to their clients. They advise clients on raising funds from the equity/leebt capital markets and merger and acquisitions (M&A).

RESPONSIBILITIES

- Advise corporate clients on product offerings, private equity transactions, mergers and acquisitions, and valuations.
- Determine the **best strategy** and place to **raise debt or equity capital**.
- Prepare necessary documents to **protect the company and investor**.
- Ensure all **government regulations have been adhered to**.
- Perform financial modelling using valuation methods.

SKILLS NEEDED

<p>HARD SKILLS</p> <ul style="list-style-type: none"> Financial Modelling (e.g. DCF, Public Comps, M&A Comps) Data Analytics Strong Mathematical and Numerical Skills 	<p>SOFT SKILLS</p> <ul style="list-style-type: none"> Influencing and negotiation skills Innovative Problem Solving Customer Orientation Communication
---	---

DAY IN THE LIFE

Explore our library of over 60 videos to get an intimate look into the daily lives of different professionals. Looking for a specific job? Use the category filter below to help you navigate the videos!

BROWSE ALL Filter By Category: #all

A Day in the Life of a Civil Engineer

Ever wondered what engineers do other than math? Join Yu Boi as she brings us into the world of a Civil Engineer!

By National Youth Council
#Engineering #CivilEngineer

A Day in the Life of a Game Developer

What really goes on behind the scenes of games development? Learn more about what a Game Developer does!

By National Youth Council
#ComputerScience #GameDeveloper

A Day in the Life of a Public Relations Manager

Writing about hot topics isn't what Samantha does all the time. Let's see what she has to "right" to it!

By National Youth Council
#Communication #NewMedia #PublicRelationsOfficer

A Day in the Life of a Social Media Strategist

Social media all day every day? Find out what it's like to be a Social Media Strategist.

By National Youth Council
#Communication #NewMedia #SocialMediaStrategist

REALIZE THAT YOU
ARE NOT ALONE,
THAT WE ARE IN THIS
TOGETHER AND MOST
IMPORTANTLY THAT
THERE IS HOPE.

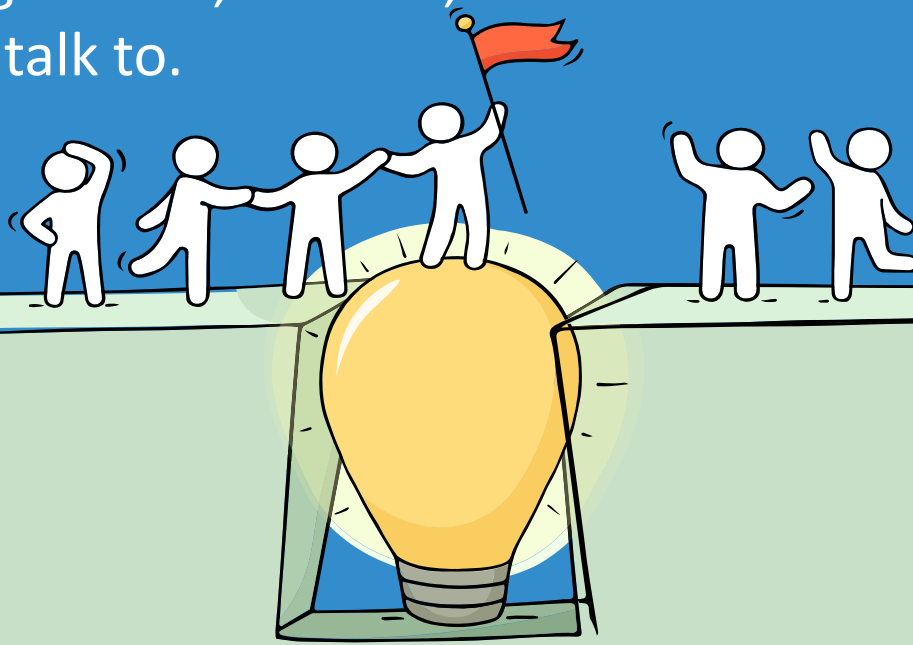
Deepika Padukone





Reaching out for help is a sign of strength, not weakness.

If you have any concerns or are not coping, do reach out to someone you trust and speak with them. It could be a parent/guardian, teacher, School Counsellor or a friend that you can talk to.





Having difficult emotions during a stressful and uncertain period is normal.

Keep a lookout for some of these signs in your peers or yourself.

D

Deliberately avoiding others

I

Increased irritability, restlessness, agitation, stress and anxiety

S

Sending or posting moody messages on social media

T

Talking about death or dying

R

Reacting differently or gradually losing interest in things they used to like

E

Eating more than usual or having a much reduced appetite

S

Sleep pattern changes with difficulty falling asleep or oversleeping

S

Slowing down of energy levels

If you notice any of these signs in yourself or your friends, **have a chat with your school counsellor or teacher**

Or contact SOS 24-hour hotline at **1800-221-4444**



Ministry of Education
Singapore

© 2020 Guidance Branch, Student Development Curriculum Division (SDCD), Ministry of Education, Singapore. No part of this final product may be reproduced or transmitted in any form or by any means, electronic or mechanical, including photocopy, recording or any other information storage and retrieval system, without written permission from SDCCD, MOE.



Supporting Your Friend

We may each experience different emotions upon receiving the results. You can share your friends' joy by congratulating them or give words of encouragement to friends who may be disappointed with their results.



Keep a lookout for your friends in distress. You can support them in the following ways:

Calm them down

“Are you ok? Calm down, take a few deep breaths.”

Hear them out

“I am here to listen to you.” or “I am here for you.”

Empathise with them

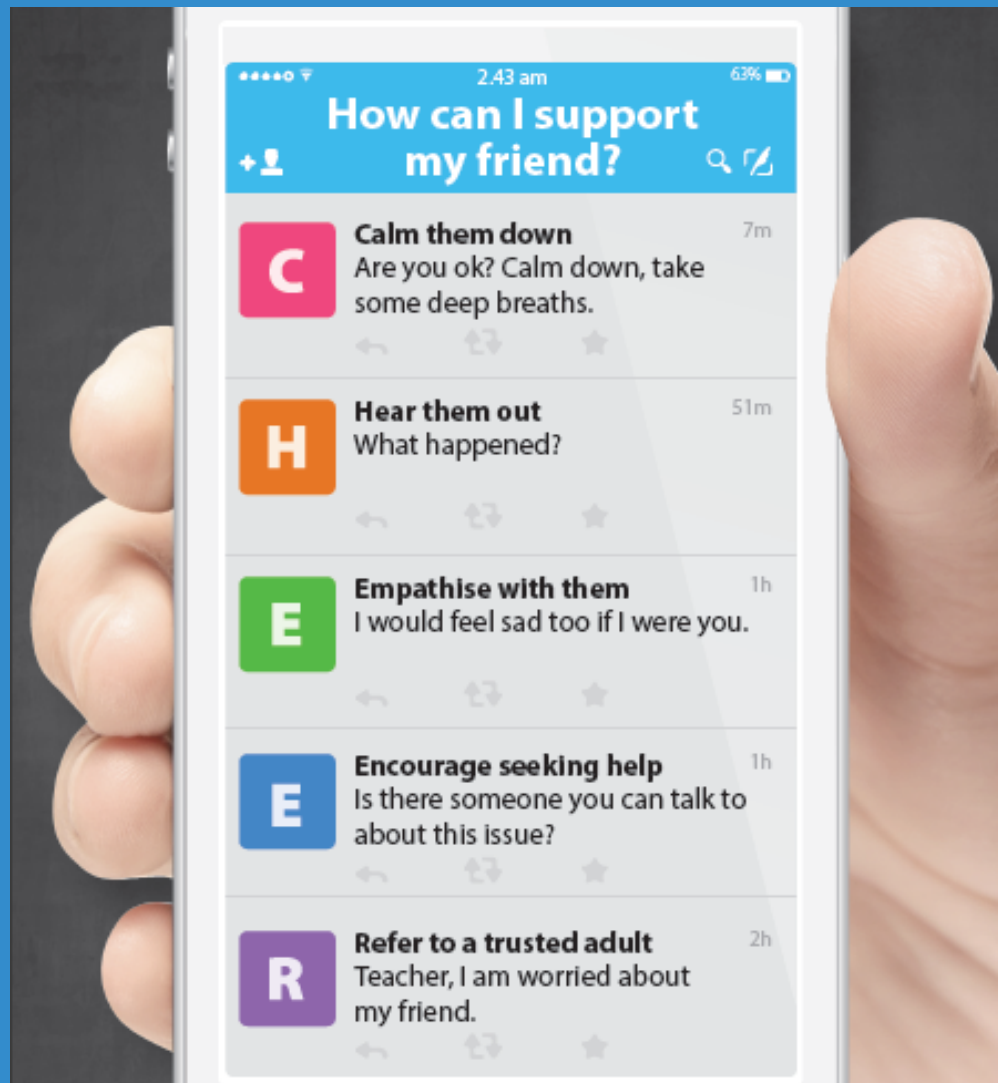
“It sounds like you are disappointed.” or “It seems like this is a difficult time for you.”

Encourage seeking help

“Thanks for sharing. Why don't we speak with a trusted adult who can help?”

Refer your friend to a trusted adult

“Let's talk to our teacher or our School Counsellor so they can better support you. Do share your feelings with your parents/guardians too. Would you like me to accompany you?”



2:43 am 63%

How can I support my friend?

C **Calm them down** 7m
Are you ok? Calm down, take some deep breaths.

H **Hear them out** 51m
What happened?

E **Empathise with them** 1h
I would feel sad too if I were you.

E **Encourage seeking help** 1h
Is there someone you can talk to about this issue?

R **Refer to a trusted adult** 2h
Teacher, I am worried about my friend.



Help is readily available for you.

There are other hotlines and chats available if you are more comfortable seeking help using these platforms.



SOS

SOS provides round the clock emotional support for those in distress, thinking of suicide or affected by suicide. This service is manned by trained volunteers.

Call: **1-767 or 1800-221-444**
(24-hour helpline)

There are also alternative avenues for emotional support through email and text messaging.

Email: **pat@sos.org.sg**
(Response within 48 hours)

SOS Care Text: **www.sos.org.sg**
(6pm – 6am on Mon to Thu and 6pm to 11:59pm on Fri)

Community Health Assessment Team (CHAT)

If you experience prolonged difficulties, CHAT provides personalised and confidential mental health checks and face-to-face consultation for youth aged 16 to 30. To speak with a youth support worker, you can:

Visit: **CHAT Hub at *SCAPE, #05-05** or

Call: **6493 6500/ 6501** or
Email: **CHAT@mentalhealth.sg**



Help is readily available for you.

There are other hotlines and chats available if you are more comfortable seeking help using these platforms.

eC2

eC2 is an e-Counselling Centre where you can talk to a trained counsellor about the issues you are facing, right where you are.

Youths may chat with a counsellor online at: www.ec2.sg

Monday – Friday (Excluding Public Holidays): 10am – 12pm & 2pm – 5pm

TOUCHline

TOUCHline is a helpline to provide youths with emotional support and practical advice.

Call: **1800 3772252**


Monday – Friday (Excluding Public Holidays): 9am – 6pm

mindline.sg

mindline.sg is an online platform that provides tools, tips and resources to help you manage your health and well-being. Explore and find out how you can improve your mental well-being and support your friends too.

Find out more: www.mindline.sg





Success is not final,
Failure is not fatal;
It is the courage to
continue that counts.

Winston Churchill



A SCHOOL OF HIGH STANDARDS, QUALITY LEARNING & HOLISTIC DEVELOPMENT

Respect • Responsibility • Integrity • Service • Excellence